

ABEBA®

# OCCUPATIONAL SHOES

MADE FOR YOU



[www.abeba.com](http://www.abeba.com)



---

# Dear business partner, dear customer,

---



the basis of a high quality shoe is besides the technical expertise and know-how the passion for shoes. Understanding and respect for the person and his needs in everyday worklife are ABEBBA's major motivation for the development of safety and occupational shoes. By living this philosophy we create the difference: Perfect protection, a healthy foot climate and best wearing comfort for an every day use.

Our main focus is to offer the best quality products therefore we make the highest demands on the materials used and the most accurate way of manufacturing.

Our demand is to exceed your demands!

ABEBBA is one of the largest and most modern shoe manufacturers in Europe with customers in more than 30 countries worldwide. With our German warehouse, our French subsidiary and our production facilities in several European countries we are always ready to meet your demands.

Since 1st of June 2007 ABEBBA is part of the traditional Polish shoe manufacturer Protektor. The Protektor S.A. is listed at the Warsaw stock exchange.

ABEBBA safety and occupational shoes are exclusively available at specialized dealers and distributors in worldwide more than 2,000 outlets with specially trained personnel.

Together with our European sales team we are happy to answer your questions about ABEBBA and our products. We can assure you that we will find the best solution customized to your particular needs.

Thank you for the trust in our company!

Your  team

# CONTENT

## OCCUPATIONAL SHOES

### Imprint

Editor:  
ABEBA Spezialeisenschuh-Ausstatter GmbH  
Schlackenbergstrasse 5  
D-66386 St. Ingbert  
Tel: +49 6894 3103-100  
Fax: +49 6894 3074  
E-Mail: abeba@abeba.de  
www.abeba.com

Editorial Team:  
ABEBA Marketing and Sales

Layout:  
blickfang marken- und designagentur GmbH

Our sales documents are also available in German and French.

We reserve the right to modify models, colours and technical details as well as the right to make a compensation or subsequent delivery. Printed on environmentally friendly paper.



---

### 16 THE ORIGINAL

The clog that convinces



---

### 26 HIGH ORIGINAL

The classic with wedge heel

---

### 28 THE ORIGINAL PLUS

Comfortable and washable

---

### 30 DYNAMIC

Athletic design with lifestyle



---

### 38 EASY

Fashion fades, only style remains the same

---

## TECHNICAL INFORMATION

007	HACCP
008 - 011	ESD / ATEX
012 - 015	ORTHOSTAT / SENSOSTAT
114 - 117	Standards / Technology

---

42 **RUBBER**  
The clog with rubber sole

---

48 **ARROW**  
The clog with high-end sole construction

---

54 **NATURE**  
Mules and clogs with cork footbed

---

60 **AIR CUSHION**  
Trendy retro style on an extremely light sole

---

66 **LIGHT**  
The right choice



---

74 **UNI6**  
Experience the future



---

86 **REFLEXOR**  
The shoe for ambitious individualists

---

94 **REFELXOR COMFORT**  
The shoe with comfort width

---

98 **SERVICE**

---

100 **MANAGER**  
Elegant and dissipative



---

102 **BUSINESS LADY**  
Elegant and dissipative

---

104 **BUSINESS MEN**

---

106 **REINRAUM**

---

108 **AUTOKLAVIERBAR**

---

---

## # ACCESSORIES

---

112 **INSOLES**

---

118 **INDEX**

---



---

# KITCHENS AND FOOD INDUSTRY

## HACCP

HACCP – Hazard Analysis Critical Control Points – is a monitoring system using risk analysis. This serves to identify, assess and combat major health risks caused by foodstuffs. In the production, treatment and processing of foodstuffs, all possible effects which might cause health problems by eating such food must be eliminated from the very beginning.

More information is available on your local HACCP website. ABEBAs are manufactured using only materials fully certified and approved by us. With this comprehensive quality assurance, we guarantee that no materials susceptible to bacterial infection are used.

Ask our trained personnel and specialist dealers for the correct footwear for your needs. Please ask us for any support.

We are prepared!

Numerous styles have already been microbiologically tested by the Test and Research Institute Pirmasens (PFI) and have been certified according to Baumgart (HACCP-compliant). Please refer to all shoes marked with the „A-micro“ and „HACCP-compliant“ icon.



### **HACCP - HAZARD ANALYSIS CRITICAL CONTROL POINTS**

1. Conduct a Hazard Analysis
2. Identify the Critical Control Points (CCPs)
3. Establish Critical Limits
4. Monitor CCPs
5. Establish Corrective Plan
6. Verification of the system
7. Record keeping

---

# ESD

# ELECTROSTATIC

# DISCHARGE

Electrostatic Discharge (ESD) means the compensation of big differences in potential that causes high voltage pulses. This voltage pulse can cause damages or even destroy electronic components.

Potential differences often result from friction or contact and separation of items. By this a human can be charged up to 30.000 Volts. The electrostatic discharge can only be felt by a person from 2.000 Volt on as a small electric shock. However electrostatic sensitive devices can be harmed by a blocking voltage of 5 – 30 V. Therefore while working with electrostatic sensitive devices actions have to be taken to reduce electrical charges reliable and prevent the occurrence of quick discharge.

Actions against static discharge are described in the EN 61340-5-1 standard. An effective grounding of persons by using ESD footwear serves to protect sensitive devices by frequently discharging the human body.



ESD shoes are made to discharge the electrostatic charge through the ground to the earth potential. The resistance of the system Person-Shoe-Ground shall be below 35 MOhm according to EN 61340-5-1 (verification). The qualification of the ESD footwear according to EN 61340-4-3 is measured in relation to the climate class 1 (12% RH), 2 (25% RH) and 3 (50% RH).

According to EN 61340-4-3 the shoe is preconditioned adequately and measured filled with a defined quantity of metal balls on a metal plate. Here the resistance shall be below 100 MOhm.

In practice the discharge capacity of ESD footwear is not only highly depending on the climatic environment (humidity and temperature) but also on factors like contamination and condition of the flooring as well as the electrical resistance of the person's body. ESD representatives of a company have to check frequently if the implemented ESD products still work in a proper way. Where ESD footwear is worn the resistance of the flooring should not influence the functionality of the ESD shoes. The implementation of "walking tests" helps to validate the functionality of the system Person-Shoe-Flooring.

**WARNING:** : ESD shoes are not suitable for electricians or while working on sources with any electric voltage.





## DEFINITION

### ESD - Electrostatic Discharge

Electrostatic discharge is caused by an imbalance of potential on charged objects or people by contact or close proximity.

### ESDS

Electrostatic Discharge Sensitive Device

### EPA

Electrostatic Protected Area

Area where sensitive devices can be handled directly with minimum risk of electrostatic damage.

### Electrostatic charge

Is produced by frictional contact and separation of two materials.

### Resistance to ground (R<sub>g</sub>) EN 61340

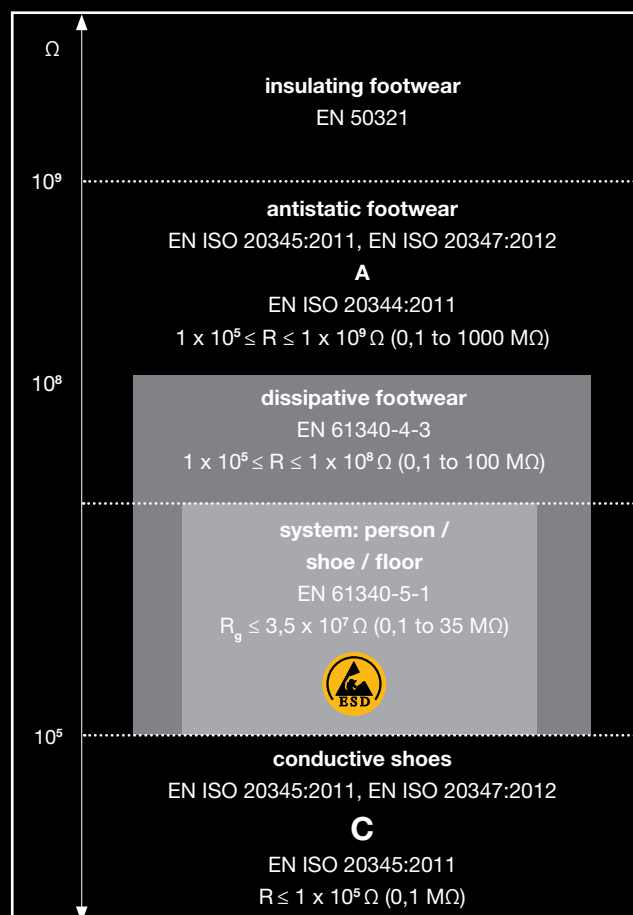
Is the resistance from a surface or an item within an EPA, measured with a suitable ohmmeter and test probe.

### Latent damage

Is the damage caused by ESD to sensitive devices, which has the effect of reducing components reliability without causing immediate failure.

## INFORMATION

Electrical resistance and protection against electrostatic phenomenons. ESD-footwear as primary grounding in the system of person/ shoe/ floor



A and C: additional requirements of occupational- and safety shoes regarding electric property. R: electrical resistance. R<sub>g</sub>: ground resistance.

For the daily function testing of the shoes the use of test stations has been established. There the resistance of person and shoe is measured. Attention should be paid to the separate measuring of the feet.



### ESD SUSCEPTIBLE

The symbol has been used since 1984 and denotes components and subassemblies that are ESD susceptible.



### ESD PROTECTIVE

The symbol was introduced in addition to symbol No. 1 in 1993 and denotes ESD protective products such as antistatic mats, trucks, clothing, protective covering, cartons, materials, etc.

### Resistance Terminology

10 <sup>3</sup> Ohm =	0,001 MOhm =	1 kOhm
10 <sup>4</sup> Ohm =	0,01 MOhm =	10 kOhm
10 <sup>5</sup> Ohm =	0,1 MOhm =	100 kOhm
10 <sup>6</sup> Ohm =	1 MOhm =	1.000 kOhm
10 <sup>7</sup> Ohm =	10 MOhm	
10 <sup>8</sup> Ohm =	100 MOhm	
10 <sup>9</sup> Ohm =	1.000 MOhm =	1 GOhm
10 <sup>10</sup> Ohm =	10.000 MOhm =	10 GOhm
10 <sup>11</sup> Ohm =	100.000 MOhm =	100 GOhm
10 <sup>12</sup> Ohm =	1.000.000 MOhm =	1.000 GOhm

---

# IGNITION SOURCE ELECTROSTATIC DISCHARGE



**ATEX**  
ATMOSPHERE **EXPLOSIBLE**  
EXPLOSIVE ATMOSPHERE

---

## IGNITION SOURCE ELECTROSTATIC DISCHARGE

Under certain conditions explosions may occur in technical plants which as a result can harm persons seriously. Due to this the necessity and meaning of explosion protection is getting more and more important. The basis of the explosion prevention is for example manifested in the ATEX directive of the European Union. ATEX comes from the French ATmosphère EXplosible. Areas subject to explosion hazards can be found in the chemical industry, while handling of inflammable liquids, gases, paints or coatings as well as in areas with intensive dust load like in printing houses, mills, grain silos or in the woodworking industry.

A major objective for the explosion protection is to avoid any ignition source. Besides obvious ignition sources like flames and sparks the electrostatic charge of persons and plant inventory should also be avoided as a person for example can be charged up to 30.000 Volt.

The minimum ignition energy (MIE) is an explosion prevention parameter for inflammable substances measured in millijoule (mJ). The MIE describes the ignition sensitivity due to static discharge of an explosive atmosphere. 2 to 3 kV is needed to cause a noticeable sensation to a person that reflects a MIE of approx. 0.7 mJ. Substances like Benzol already inflame at approx. 0.2 mJ. Besides gas-air mixtures dust-air mixtures also belong to explosive atmospheres.

An effective way of avoiding electrostatic discharge as an ignition source and to secure the workers is personnel grounding by using Abeba ESD shoes with ATEX marking. In combination with dissipative flooring Abeba ESD shoes avoid the built up of electric charge on the person's body and hereby the sudden discharge of the wearer. Europe-wide Abeba ATEX shoes are the first safety and occupational shoes to be certified for the use in explosive areas. The following standards and directives were considered:

Directive 1999/92/EG  
EN 61340-4-3 (climate class 1)  
CLC/TR 50404:2003



Shoes used in explosive areas zone 0, 1, 20 and 21 shall be dissipative with a resistance of less than 100 MOhm. Our shoes meet these requirements according to EN 61340-4-3 (metal balls in shoe on metal plate) and EN 61340-5-1 (person in shoe on metal plate). All Abeba ATEX shoes are certified according to EN 61340 with climate class 1.

In climate class 1 the shoe is preconditioned to 12% RH (relative humidity) and still needs to meet the requirement of a resistance less than 100 MOhm.

## WALKING TEST

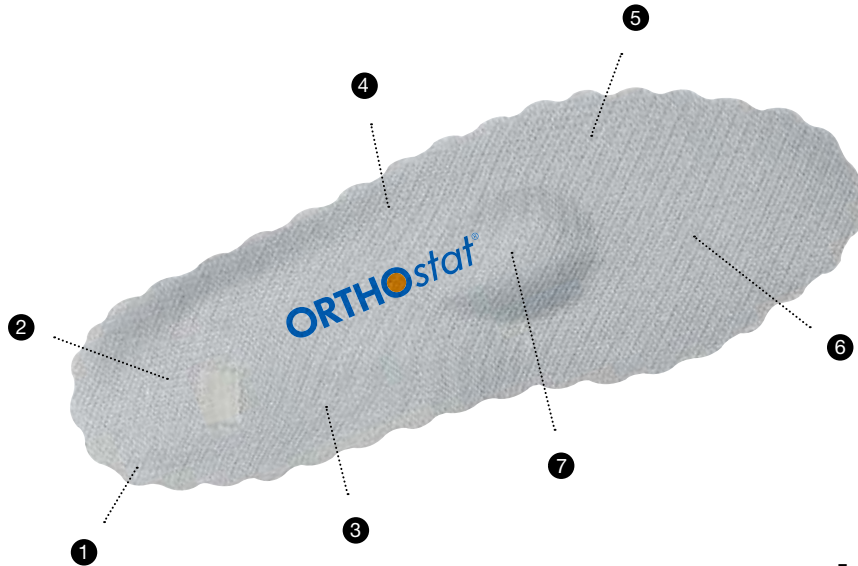
The experience shows that it is not enough just to control the resistance value of the ATEX/ ESD-shoes. To assure a sufficient protection against the static charge of employees, we recommend to add the walking test (according to EN 61340-4-5, charge must be below 100 V) to complete your security program for explosive areas.

If ATEX/ ESD-shoes are used the following facts should be considered:

- Effective ATEX/ ESD-protection is only assured by using ATEX/ ESD-shoes in combination with an ESD-floor
- Dirt or dust on the outsole may lead to an isolating layer
- Orthopaedic insoles and modifications must not affect the resistance of the shoe



# ORTHOPEDIC INSOLES



- 1 Light and stays in shape
- 2 Anatomically shaped heel area
- 3 Longitudinal and transversal arch support
- 4 ESD in combination with Abeba footwear
- 5 Skin-friendly
- 6 Bedding of the metatarsal head area
- 7 Anatomically shaped pad

## ORTHOSTAT

With all orthopedic adaptation it has to be tested if the safety or occupational shoe still meets the requirements of the EN ISO 20345 or EN ISO 20347 standards. Together with the orthopedic specialist Doppler ([www.doppler-online.com](http://www.doppler-online.com)) we have developed the individually adaptable orthopedic insole ORTHOstat. By using this insole your shoes will remain certified according to EN ISO standard.

## THE FOOT IS THE BASIS

Your customized orthopedic insoles ORTHOstat will have a direct impact on your foot and with this on your well-being.



There is a direct connection between the feet and various joints in our body which are frequently stressed by everyday use. Even small incorrect positions of the feet may have serious consequences for your knees, hips, back and with this on your complete well-being. The ORTHOstat insole relieves you from pain or even prevents its development.

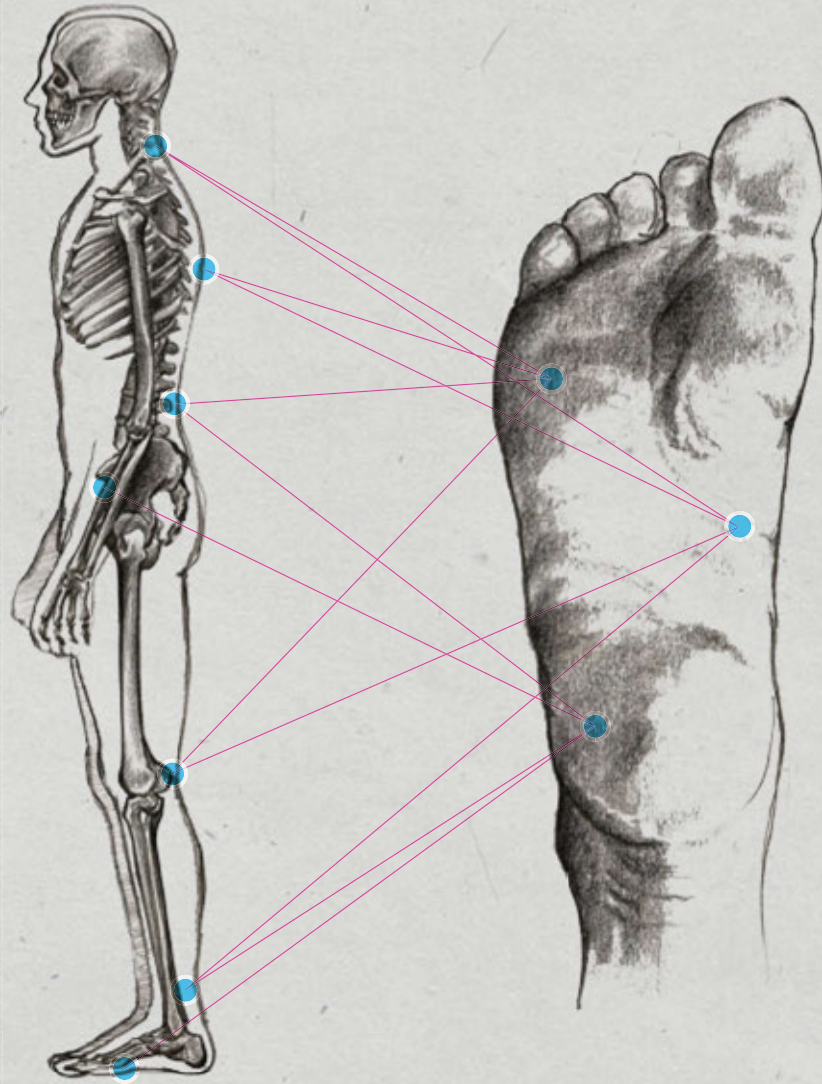
- ▶ Compensation of biomechanical stress
- ▶ Maintains your manpower
- ▶ Reduces downtime

# 26

---

bones, 60 muscles, 33 joints  
and 114 ligaments are forming one  
of the most complex structure  
of the human body,  
the foot.

---



# 2.500

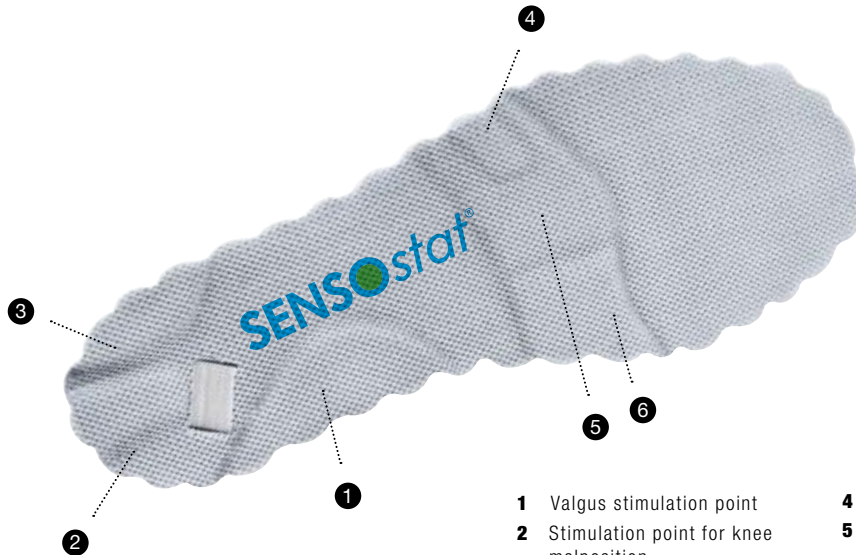
---

tons of weight are carried by the  
feet every day (person of 70 kilo).  
This corresponds to the weight  
of 5 passenger trains.

---



# SENSORIMOTOR INSOLES



- |  |   |
|--|---|
| 1 Valgus stimulation point               | 4 Spine   |
| 2 Stimulation point for knee malposition | 5 Stimulation point for repositioning of the pelvis |
| 3 Varus stimulation point                | 6 Stimulation point for Hallux Valgus               |

## SENSOSTAT

Also here it is essential that the shoe remains safe according to the EN ISO 20345 and EN ISO 20347 although and orthopedic customization has been done to the insole. The sensorimotor insole SENSOSTAT has as well as the ORTHOSTAT insole been developed together with the specialist Doppler and your safety and occupational shoes will remain certified according to the EN ISO standards.

## FROM THE FEET TO THE HEAD

The stimulation points on the individually customized SENSOSTAT insole are sending direct feedback to the brain stem to adapt the triggering of the body. By this the body comes back into balance and facilitates standing and walking. The position of the feet is long-term corrected and relieves knees, hips, the pelvis and your spine.

## SENSOstat®

### The effects:

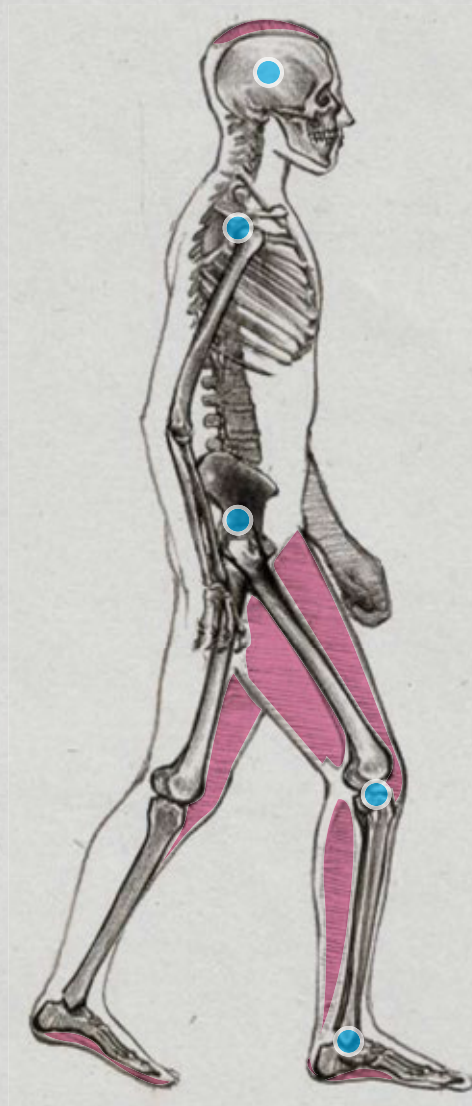
- ▶ Straightening up due to "Relearning", motion sequence is being reprogrammed into the brain stem
- ▶ Body posture and gait pattern are being improved
- ▶ Triggering the brain by means of stimulation areas
- ▶ The muscles are being strengthened
- ▶ Selective impulses are being used to positively influence the locomotor system
- ▶ The joints are being relieved
- ▶ Wrong posture or motion patterns are being fixed systematically
- ▶ Discomfort is being resolved conservatively long-term

# 96

---

reflex zones are mostly positioned on the sole of the foot but also from the arch up to the ankle.

---



# 220.000.000

---

steps are walked by a person during its life which corresponds to 160.000 kilometers. We are walking 4 times around the globe.

---

the ORIGINAL







# THE ORIGINAL

## THE CLOG THAT CONVINCES

An all-rounder for the highest demands in quality, comfort and design, which won't let you down on difficult floors thanks to its high slip resistance.

Whether conventional, colourful or with smart design the Original is always the right choice for work or leisure time. Every buckle is corrosion-resistant and nickel-free.

[WWW.ABEBA.COM](http://WWW.ABEBA.COM)



## HIGHLIGHTS

- Sanitized® treated
- TÜV GS - tested safety

## TECHNOLOGY

### HEEL STRAP

adjustable, foldable



### PERFORATION

for good ventilation



## OUTSOLE

### 1\_SRC slip resistance

according to EN ISO 20347:2012

### 2\_ Resistant

to animal fats, oil and fuel

### 3\_Cross/ circle profile



THE ORIGINAL



NEW



OB

A<sup>micro</sup>

77021

CE, EN ISO 20347:2012 OB, E, FO, SRC  
Size 35-47 | microfiber white | insole microfiber |  
**TPU-outsole** | heel strap foldable, adjustable



NEW



OB

A<sup>micro</sup>

77031

CE, EN ISO 20347:2012 OB, E, FO, SRC  
Size 35-47 | microfiber black | insole microfiber |  
**TPU-outsole** | heel strap foldable, adjustable





NEW



OB

A<sup>®</sup> micro

77030

CE, EN ISO 20347:2012 OB, E, FO, SRC  
 Size 35-47 | microfiber black, perforated | insole microfiber |  
**TPU-outsole** | heel strap foldable, adjustable



NEW



OB

A<sup>®</sup> micro

77020

CE, EN ISO 20347:2012 OB, E, FO, SRC  
 Size 35-47 | microfiber white, perforated | insole microfiber |  
**TPU-outsole** | heel strap foldable, adjustable





**OB**

**7021**

CE, EN ISO 20347:2012 OB, FO, SRC  
Size 35-47 | smooth leather white | insole leather | heel strap foldable, adjustable



**OB**

**7031**

CE, EN ISO 20347:2012 OB, FO, SRC  
Size 35-47 | smooth leather black | insole leather | heel strap foldable, adjustable



**OB**

**7030**

CE, EN ISO 20347:2012 OB, FO, SRC  
Size 35-47 | smooth leather black, perforated | insole leather | heel strap foldable, adjustable



**OB**

**7020**

CE, EN ISO 20347:2012 OB, FO, SRC  
Size 35-47 | smooth leather white, perforated | insole leather | heel strap foldable, adjustable



**OB**

**7204**

CE, EN ISO 20347:2012 OB, FO, SRC  
 Size 35-47 | smooth leather white with pattern | insole leather |  
 heel strap foldable, adjustable | heel cushion



**OB**

**7207**

CE, EN ISO 20347:2012 OB, FO, SRC  
 Size 35-43 | smooth leather white/ blue with pattern | insole  
 leather | heel strap foldable, adjustable | heel cushion



**OB**

**7205**

CE, EN ISO 20347:2012 OB, FO, SRC  
 Size 35-47 | smooth leather white with pattern | insole leather |  
 heel strap foldable, adjustable | heel cushion

**! INFORMATION**

Additionally to these models in stock we can offer you custom-made designs.

Prices and lead time on request.

The minimum order quantity is around 300 pairs and can be ordered in assortments of 10 pairs per size.





**OB**

**antistatic**

**5013**

CE, EN ISO 20347:2012 OB, A, FO, SRC  
Size 35-47 | smooth leather white | heel patch leather | heel strap foldable, adjustable



**OB**

**antistatic**

**5081**

CE, EN ISO 20347:2012 OB, A, FO, SRC  
Size 35-43 | smooth leather white/ mint | heel patch leather | heel strap foldable, adjustable



**OB**

**7091**

CE, EN ISO 20347:2012 OB, FO, SRC  
Size 35-43 | smooth leather mint/ white | insole leather | heel strap foldable, adjustable



**OB**

**7081**

CE, EN ISO 20347:2012 OB, FO, SRC  
Size 35-43 | smooth leather blue/ white | insole leather | heel strap foldable, adjustable

**OB****antistatic****5007**

CE, EN ISO 20347:2012 OB, A, FO, SRC  
 Size 35-47 | smooth leather white, perforated | heel patch leather |  
 heel strap foldable, adjustable

**OB****antistatic****5080**

CE, EN ISO 20347:2012 OB, A, FO, SRC  
 Size 35-43 | smooth leather white/ mint, perforated | heel patch  
 leather | heel strap foldable, adjustable

**OB****7090**

CE, EN ISO 20347:2012 OB, FO, SRC  
 Size 35-43 | smooth leather mint/ white, perforated | insole leather |  
 heel strap foldable, adjustable

**OB****7080**

CE, EN ISO 20347:2012 OB, FO, SRC  
 Size 35-43 | smooth leather blue/ white, perforated | insole leather |  
 heel strap foldable, adjustable



**THE ORIGINAL**



**OB**

**7201**

CE, EN ISO 20347:2012 OB, FO, SRC  
Size 35-47 | smooth leather white/ black with pattern | insole leather | heel strap foldable, adjustable | heel cushion



**OB**

**7212**

CE, EN ISO 20347:2012 OB, FO, SRC  
Size 35-47 | smooth leather black/ white with pattern | insole leather | heel strap foldable, adjustable | heel cushion



**OB**

**7203**

CE, EN ISO 20347:2012 OB, FO, SRC  
Size 35-47 | smooth leather white/ blue with pattern | insole leather | heel strap foldable, adjustable | heel cushion







**OB**

**7050**

CE, EN ISO 20347:2012 OB, FO, SRC

Size 35-47 | smooth leather white | insole leather | instep strap adjustable



**OB**

**7209**

CE, EN ISO 20347:2012 OB, FO, SRC

Size 35-47 | smooth leather black | insole leather | heel strap non-foldable, removable | instep strap adjustable | lining extremely soft microfiber with Silver ions | heel cushion



**OB**

**7208**

CE, EN ISO 20347:2012 OB, FO, SRC

Size 35-47 | smooth leather white | insole leather | heel strap non-foldable, removable | instep strap adjustable | lining extremely soft microfiber with Silver ions | heel cushion

# high ORIGINAL



**OB**

**7111**



**5011**

CE, EN ISO 20347:2012 OB, A, E, FO, SRC  
 Size 36-42 | smooth leather black | heel patch leather | heel strap foldable, adjustable | padded instep area | PU-outsole | wedge heel 45 mm | narrow fit



**OB**

**7110**



**5010**

CE, EN ISO 20347:2012 OB, A, E, FO, SRC  
 Size 36-42 | smooth leather white | heel patch leather | heel strap foldable, adjustable | padded instep area | PU-outsole | wedge heel 45 mm | narrow fit



**OB**

**7009**

**OB**



**5009**

CE, EN ISO 20347:2012 OB, A, E, FO, SRC  
 Size 36-42 | smooth leather black, perforated | heel patch leather | heel strap foldable, adjustable | PU-outsole | wedge heel 45 mm | narrow fit



**OB**

**7008**

**OB**



**5008**

CE, EN ISO 20347:2012 OB, A, E, FO, SRC  
 Size 36-42 | smooth leather white, perforated | heel patch leather | heel strap foldable, adjustable | PU-outsole | wedge heel 45 mm | narrow fit



**OB**

**7002**

**OB**



**5004**

CE, EN ISO 20347:2012 OB, A, E, FO, SRC  
 Size 36-42 | smooth leather white | heel patch leather | heel strap foldable, adjustable | PU-outsole | wedge heel 45 mm | narrow fit



**OB**

**7001**

**OB**



**5001**

CE, EN ISO 20347:2012 OB, A, E, FO, SRC  
 Size 36-42 | smooth leather white, perforated | heel patch leather | heel strap foldable, adjustable | PU-outsole | wedge heel 45 mm | narrow fit

the ORIGINAL 

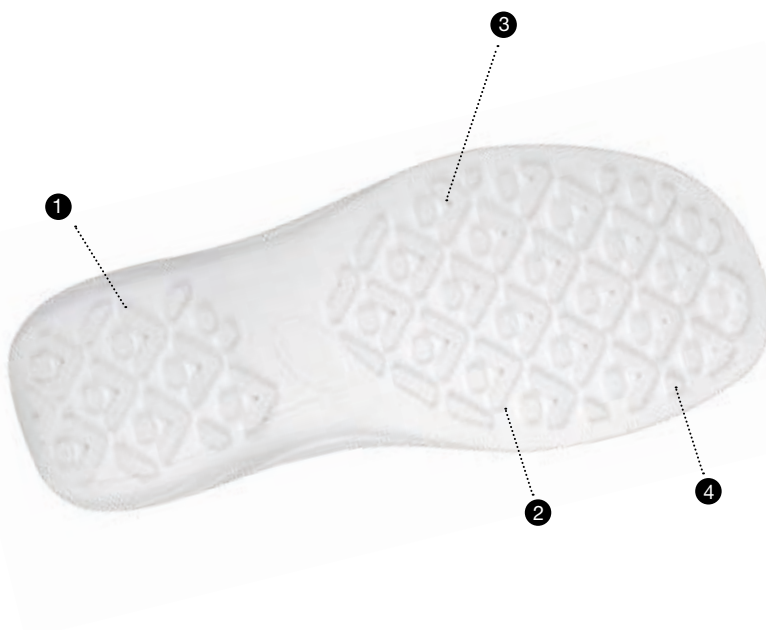


## HIGHLIGHTS

- A-micro
- Sanitized® treated
- TÜV GS - tested safety

## OUTSOLE

- 1\_Antistatic/ ESD dissipative**  
according to EN 61340
- 2\_SRC slip resistance**  
according to EN ISO 20347:2012
- 3\_TPU sole**  
abrasion resistant
- 4\_Resistant**  
to animal fats, oil and fuel



 A<sup>®</sup>micro



**OB**  **7521**

**OB**   **37521**

CE, EN ISO 20347:2012 OB, A, E, FO, SRC  
 Size 36-42 | microfiber white | heel patch microfiber | heel strap foldable, adjustable



**OB**  **7531**

**OB**   **37531**

CE, EN ISO 20347:2012 OB, A, E, FO, SRC  
 Size 36-42 | microfiber black | heel patch microfiber | heel strap foldable, adjustable






**OB**  **7530**

**OB**   **37530**

CE, EN ISO 20347:2012 OB, A, E, FO, SRC  
 Size 36-42 | microfiber black, perforated | heel patch microfiber | heel strap foldable, adjustable



**OB**  **7520**

**OB**   **37520**

CE, EN ISO 20347:2012 OB, A, E, FO, SRC  
 Size 36-42 | microfiber white, perforated | heel patch microfiber | heel strap foldable, adjustable



**DYNAMIC**



[www.hebea.com](http://www.hebea.com)  
© 2015 Hebea

# DYNAMIC

## ATHLETIC DESIGN WITH LIFESTYLE

The ABEBA „dynamic“ range sets new standards for innovative designs and perfect wearing comfort, supported by our replaceable „acc Wave“ insole.

The natural shape of the lasts conveys a sort of barefoot feeling and offers a stable foothold supported by the anatomically formed insole with a moulded heel area. Several flexing zones on the outsole support the bending performance and ensure your feet to roll off properly.

The styles of the „dynamic“ range exceed the requirements of the standards by innovative, tough upper materials and the technology of the ESD-compliant TPU outsole with it's amazing slip resistance.

WWW.ABEBA.COM



## HIGHLIGHTS

- Sanitized® treated
- TÜV GS - tested safety

## TECHNOLOGY

**Antistatic/ ESD dissipative**  
according to EN 61340

**ATEX**  
according to EN 61340-4-3,  
climate class 1

## OUTSOLE

- 1\_SRC slip resistance**  
according to EN ISO 20347:2012
- 2\_TPU sole**  
abrasion resistant
- 3\_Resistant**  
to animal fats, oil and fuel
- 4\_Flexing zones**  
walking comfort

## INSOLE

**REPLACEABLE ACC WAVE  
(AIR CLIMA COMFORT)**

art. 3574,  
for more information see notes on  
page 112-113



All styles of our Dynamic range  
are suitable for orthopedic  
insole **ORTHOstat**.



**DYNAMIC**



**OB**

**7310**

**OB**



**37310**

CE, EN ISO 20347:2012 OB, A, E, FO, SRC  
Size 35-48 | smooth leather white with pattern | heel strap foldable, adjustable | replaceable acc Wave insole (art. 3574)



**OB**

**7312**

**OB**



**37312**

CE, EN ISO 20347:2012 OB, A, E, FO, SRC  
Size 35-48 | smooth leather white/ blue with pattern | heel strap foldable, adjustable | replaceable acc Wave insole (art. 3574)





**OB****7313****OB****37313**

CE, EN ISO 20347:2012 OB, A, E, FO, SRC

Size 35-48 | smooth leather white/ red with pattern | heel strap foldable, adjustable | replaceable acc Wave insole (art. 3574)

**OB****7315****OB****37315**

CE, EN ISO 20347:2012 OB, A, E, FO, SRC

Size 35-48 | smooth leather black/ brown with pattern | heel strap foldable, adjustable | replaceable acc Wave insole (art. 3574)





DYNAMIC



OB

A°micro

7335

OB



A°micro

37335

CE, EN ISO 20347:2012 OB, A, E, FO, SRC  
Size 35-48 | microfiber white/ black | seamless upper | heel strap non-foldable, adjustable | replaceable acc Wave insole (art. 3574)



OB

A°micro

7331

OB



A°micro

37331

CE, EN ISO 20347:2012 OB, A, E, FO, SRC  
Size 35-48 | microfiber black/ blue | seamless upper | heel strap non-foldable, adjustable | replaceable acc Wave insole (art. 3574)



OB

A°micro

7332

OB



A°micro

37332

CE, EN ISO 20347:2012 OB, A, E, FO, SRC  
Size 35-48 | microfiber black/ red | seamless upper | heel strap non-foldable, adjustable | replaceable acc Wave insole (art. 3574)



OB

A°micro

37333

CE, EN ISO 20347:2012 OB, A, E, FO, SRC  
Size 35-48 | microfiber black/ yellow | seamless upper | heel strap non-foldable, adjustable | replaceable acc Wave insole (art. 3574)





OB

A<sup>®</sup>micro

7345

OB



A<sup>®</sup>micro

37345

CE, EN ISO 20347:2012 OB, A, E, FO, SRC  
 Size 35-48 | microfiber white/ black with **white breathable textile inlays** | heel strap non-foldable, adjustable | replaceable acc Wave insole (art. 3574)



OB

A<sup>®</sup>micro

7341

OB



A<sup>®</sup>micro

37341

CE, EN ISO 20347:2012 OB, A, E, FO, SRC  
 Size 35-48 | microfiber black/ blue with **black breathable textile inlays** | heel strap non-foldable, adjustable | replaceable acc Wave insole (art. 3574)



OB

A<sup>®</sup>micro

7342

OB



A<sup>®</sup>micro

37342

CE, EN ISO 20347:2012 OB, A, E, FO, SRC  
 Size 35-48 | microfiber black/ red with **black breathable textile inlays** | heel strap non-foldable, adjustable | replaceable acc Wave insole (art. 3574)



OB

A<sup>®</sup>micro

37343

CE, EN ISO 20347:2012 OB, A, E, FO, SRC  
 Size 35-48 | microfiber black/ yellow with **black breathable textile inlays** | heel strap non-foldable, adjustable | replaceable acc Wave insole (art. 3574)





NEW



OB

A°micro

7366

OB



A°micro

37366

CE, EN ISO 20347:2012 OB, A, E, FO, SRC  
Size 35-48 | microfiber grey/ white | heel strap non-foldable, adjustable | replaceable acc Wave insole (art. 3574)



HACCP



OB

A°micro

7360

OB



A°micro

37360

CE, EN ISO 20347:2012 OB, A, E, FO, SRC  
Size 35-48 | microfiber white | heel strap non-foldable, adjustable | replaceable acc Wave insole (art. 3574)



HACCP



OB

A°micro

7361

OB



A°micro

37361

CE, EN ISO 20347:2012 OB, A, E, FO, SRC  
Size 35-48 | microfiber black | heel strap non-foldable, adjustable | replaceable acc Wave insole (art. 3574)



HACCP





**OB**

A<sup>®</sup>micro

**7365**

**OB**



A<sup>®</sup>micro

**37365**

CE, EN ISO 20347:2012 OB, A, E, FO, SRC  
 Size 35-48 | microfiber grey/ black | heel strap non-foldable, adjustable | replaceable acc Wave insole (art. 3574)



**OB**

A<sup>®</sup>micro

**7362**

**OB**



A<sup>®</sup>micro

**37362**

CE, EN ISO 20347:2012 OB, A, E, FO, SRC  
 Size 35-48 | microfiber grey/ blue | heel strap non-foldable, adjustable | replaceable acc Wave insole (art. 3574)



**OB**

A<sup>®</sup>micro

**7363**

**OB**



A<sup>®</sup>micro

**37363**

CE, EN ISO 20347:2012 OB, A, E, FO, SRC  
 Size 35-48 | microfiber grey/ red | heel strap non-foldable, adjustable | replaceable acc Wave insole (art. 3574)



**OB**

A<sup>®</sup>micro

**7364**

**OB**



A<sup>®</sup>micro

**37364**

CE, EN ISO 20347:2012 OB, A, E, FO, SRC  
 Size 35-48 | microfiber grey/ yellow | heel strap non-foldable, adjustable | replaceable acc Wave insole (art. 3574)



*easy*



# EASY

FASHION FADES, ONLY STYLE REMAINS THE SAME.  
(COCO CHANEL)

Broaden your horizon. The ABEBA „Easy“ range proves that you don't have to compromise your style at work. We can offer you an allround carefree package made out of wearing comfort, perfect fit, technology, functionality and design.

Our shoes support your poise by their innovative walking sole with special profile and high slip resistance while your feet experience a maximum comfort through naturally shaped lasts, flexing zones in the walking sole and replaceable „acc Wave“ insoles.

Try out and enjoy the ABEBA „Easy“!

WWW.ABEBA.COM



## HIGHLIGHTS

- Sanitized® treated
- TÜV GS - tested safety

## TECHNOLOGY

**Antistatic/ ESD dissipative**  
according to EN 61340

**ATEX**  
according to EN 61340-4-3,  
climate class 1

## OUTSOLE

- 1\_SRC slip resistance**  
according to EN ISO 20347:2012
- 2\_TPU sole**  
abrasion resistant
- 3\_Resistant**  
to animal fats, oil and fuel
- 4\_Flexing zones**  
walking comfort

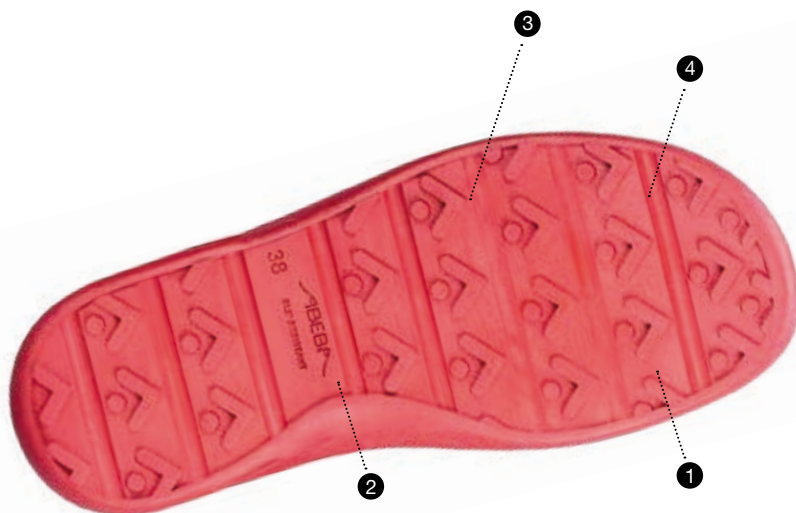
## INSOLE

**REPLACEABLE ACC WAVE  
(AIR CLIMA COMFORT)**

art. 3573,  
for more information see notes on  
page 112-113



All styles of our Easy range  
are suitable for orthopedic  
insole **ORTHOstat**.





EASY



OB

7630

OB



37630

CE, EN ISO 20347:2012 OB, A, E, FO, SRC  
Size 35-48 | smooth leather white, perforated | heel strap foldable, adjustable | replaceable acc Wave insole (art. 3573)



OB

7631

OB



37631

CE, EN ISO 20347:2012 OB, A, E, FO, SRC  
Size 35-48 | smooth leather black, perforated | heel strap foldable, adjustable | replaceable acc Wave insole (art. 3573)



OB

A<sup>micro</sup>

7621

OB



A<sup>micro</sup>

37621

CE, EN ISO 20347:2012 OB, A, E, FO, SRC  
Size 35-43 | microfiber patent black | heel strap non-foldable, adjustable | replaceable acc Wave insole (art. 3573)



OB

A<sup>micro</sup>

7620

OB



A<sup>micro</sup>

37620

CE, EN ISO 20347:2012 OB, A, E, FO, SRC  
Size 35-43 | microfiber patent white | heel strap non-foldable, adjustable | replaceable acc Wave insole (art. 3573)







**OB**

**7622**

**OB**



**37622**

CE, EN ISO 20347:2012 OB, A, E, FO, SRC  
 Size 35-48 | smooth leather white/ blue | heel strap non-foldable,  
 adjustable | replaceable acc Wave insole (art. 3573)



**OB**

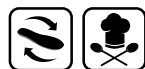
**7623**

**OB**



**37623**

CE, EN ISO 20347:2012 OB, A, E, FO, SRC  
 Size 35-43 | smooth leather white/ red | heel strap non-foldable,  
 adjustable | replaceable acc Wave insole (art. 3573)



rubber



# RUBBER

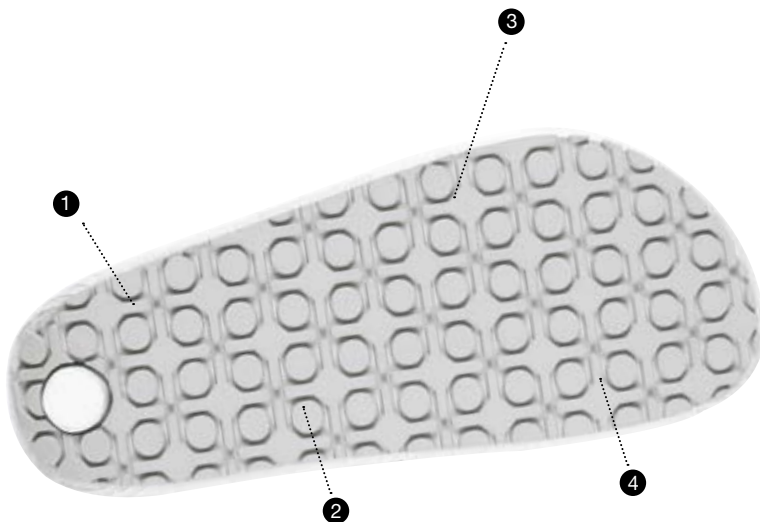
## THE CLOG WITH RUBBER SOLE

Are you familiar with the requirements for appropriate footwear?

Especially in working areas where aggressive cleaning agents attack common soles, you're on the safe side with „rubber“. Its rubber sole features acid and base resistance and complies with the special rules to slip resistance on floors with ceramic tiles.

With its shock absorbing midsole and the anatomically shaped footbed as well as the leather insole, our rubber brings you through a hard working day easily.

WWW.ABEBA.COM



## HIGHLIGHTS

- Sanitized® treated
- TÜV GS - tested safety

## TECHNOLOGY

### ANTISTATIC/ ESD DISSIPATIVE

according to EN 61340

### HEEL STRAP

adjustable and foldable



fixed with adjustable fastening



### PERFORATION

for good ventilation



## OUTSOLE

### 1 SRC slip resistance

according to EN ISO 20347:2012

### 2 Rubber sole

abrasion resistant

### 3 Resistant

to acid, base and fuel

### 4 Cross/ circle profile



**RUBBER**



**OB**

**9200**

**OB**



**5200**

CE, EN ISO 20347:2012 OB, A, FO, WRU, SRC  
Size 36-47 | smooth leather white | insole or heel patch leather |  
heel strap foldable, adjustable



**OB**

**9250**

**OB**



**5250**

CE, EN ISO 20347:2012 OB, A, FO, WRU, SRC  
Size 36-47 | smooth leather navy blue | insole or heel patch leather |  
heel strap foldable, adjustable



**OB**

**9252**

CE, EN ISO 20347:2012 OB, A, FO, WRU, SRC  
Size 36-47 | smooth leather black | insole leather | heel strap  
foldable, adjustable





**OB**

**9300**

**OB**



**5300**

CE, EN ISO 20347:2012 OB, A, FO, SRC  
 Size 36-47 | smooth leather white, perforated | insole or heel patch leather | heel strap foldable, adjustable



**OB**

**9310**

**OB**



**5310**

CE, EN ISO 20347:2012 OB, A, FO, SRC  
 Size 36-47 | smooth leather black, perforated | insole or heel patch leather | heel strap foldable, adjustable





**RUBBER**



**OB**

**9100**



**5100**

CE, EN ISO 20347:2012 OB, A, FO, WRU, SRC  
Size 36-47 | smooth leather white | insole or heel patch leather |  
heel strap non-foldable, adjustable | instep strap adjustable



**OB**

**9150**



**5150**

CE, EN ISO 20347:2012 OB, A, FO, WRU, SRC  
Size 36-47 | smooth leather navy blue | insole or heel patch  
leather | heel strap non-foldable, adjustable | instep strap  
adjustable



**OB**

**9110**

CE, EN ISO 20347:2012 OB, A, FO, WRU, SRC  
Size 36-47 | smooth leather black | insole leather | heel strap  
non-foldable, adjustable | instep strap adjustable



**OB**

**9230**

CE, EN ISO 20347:2012 OB, A, FO, WRU, SRC  
Size 36-47 | smooth leather white with pattern | heel patch leather |  
heel strap non-foldable, adjustable





OB

9220

OB



5220

CE, EN ISO 20347:2012 OB, A, FO, WRU, SRC  
 Size 36-47 | smooth leather white | heel patch leather | heel strap non-foldable, adjustable



OB

9225

OB



5225

CE, EN ISO 20347:2012 OB, A, FO, WRU, SRC  
 Size 36-47 | smooth leather black | heel patch leather | heel strap non-foldable, adjustable



OB

9245

OB



5245

CE, EN ISO 20347:2012 OB, A, FO, SRC  
 Size 36-47 | smooth leather black with grey **breathable textile inlays** | heel patch leather | heel strap non-foldable, adjustable



OB

9240

OB



5240

CE, EN ISO 20347:2012 OB, A, FO, SRC  
 Size 36-47 | smooth leather white with grey **breathable textile inlays** | heel patch leather | heel strap non-foldable, adjustable



Arrow





# ARROW

## THE CLOG WITH HIGH-END SOLE CONSTRUCTION

The shock absorbing PU-midsole guarantees an ideal balance of stability and cushioning effect. It protects your ligaments and joints even while standing or walking on a hard floor all day.

The walking sole has a high slip resistance and is abrasion-resistant thanks to its innovative tread pattern. A selection of premium upper materials as well as the variation of heel straps makes the Arrow the first choice for catering, healthcare and industry.

Our metal buckles and rivets are corrosion-resistant and nickel-free.

[WWW.ABEBA.COM](http://WWW.ABEBA.COM)



## HIGHLIGHTS

- Up to size 51
- Wide fit
- Sanitized® treated

## TECHNOLOGY

### ANTISTATIC/ ESD DISSIPATIVE

according to EN 61340

### ATEX

according to EN 61340-4-3,  
climate class 1

### HEEL STRAP

adjustable and foldable



fixed with adjustable fastening



### PERFORATION

for good ventilation



## OUTSOLE

### 1\_SRA slip resistance

according to EN ISO 20347:2012

### 2\_Double-layer PU-sole or lightweight Mono-PU-sole


shock absorption, lightweight



ARROW



**OB**  **8220**

**OB**  **8230**

**OB**   **38220**

**OB**   **38230**

CE, EN ISO 20347:2012 OB, A, FO, SRA  
Size 35-43 | microfiber white/ grey with pattern | heel patch  
microfiber | heel strap foldable, adjustable

CE, EN ISO 20347:2012 OB, A, FO, SRA  
Size 35-43 | microfiber white/ pink with pattern | heel patch  
microfiber | heel strap foldable, adjustable

**OB**

Size 35-47

**8300****OB**

Size 48-51

**8302****OB**

Size 35-47

**38300****OB**

Size 48-51

**38302**

CE, EN ISO 20347:2012 OB, A, FO, SRA  
microfiber white | heel patch microfiber | heel strap foldable,  
adjustable

**OB**

Size 35-47

**8310****OB**

Size 48-51

**8312****OB**

Size 35-47

**38310****OB**

Size 48-51

**38312**

CE, EN ISO 20347:2012 OB, A, FO, SRA  
microfiber black | heel patch microfiber | heel strap foldable,  
adjustable

**OB**

Size 35-47

**8330****OB**

Size 48-51

**8332****OB**

Size 35-47

**38330****OB**

Size 48-51

**38332**

CE, EN ISO 20347:2012 OB, A, FO, SRA  
microfiber black, perforated | heel patch microfiber |  
heel strap foldable, adjustable

**OB**

Size 35-47

**8320****OB**

Size 48-51

**8322****OB**

Size 35-47

**38320****OB**

Size 48-51

**38322**

CE, EN ISO 20347:2012 OB, A, FO, SRA  
microfiber white, perforated | heel patch microfiber | heel strap  
foldable, adjustable





ARROW




**OB** Size 35-47 **8200**


**OB** Size 35-47 **8210**

**OB** Size 48-51 **8202**

**OB** Size 48-51 **8212**

**OB**  Size 35-47 **38200**

**OB**  Size 35-47 **38210**

**OB**  Size 48-51 **38202**

**OB**  Size 48-51 **38212**

CE, EN ISO 20347:2012 OB, A, FO, SRA  
smooth leather white | heel patch microfiber | lining leather |  
heel strap foldable, adjustable

CE, EN ISO 20347:2012 OB, A, FO, SRA  
smooth leather black | heel patch microfiber | lining leather | heel  
strap foldable, adjustable

**OB**  Size 35-47 **35600**

**OB**  Size 48-51 **35602**

CE, EN ISO 20347:2012 OB, A, FO, SRA  
smooth leather white, perforated | heel patch microfiber | lining  
leather | heel strap foldable, adjustable





**OB**

Size 35-47

**8600**

**OB**

Size 48-51

**8602**

**OB**



Size 35-47

**38600**

**OB**



Size 48-51

**38602**

CE, EN ISO 20347:2012 OB, A, FO, SRA  
 smooth leather white, perforated | heel patch microfiber | lining  
 leather | heel strap non-foldable, adjustable | padded instep with  
 elastic band



**OB**

**8400**

**OB**



**38400**

CE, EN ISO 20347:2012 OB, A, FO, SRA  
 Size 35-47 | smooth leather white | heel patch microfiber |  
 lining leather | heel strap non-foldable, adjustable |  
 instep strap adjustable



# NATURE



# NATURE

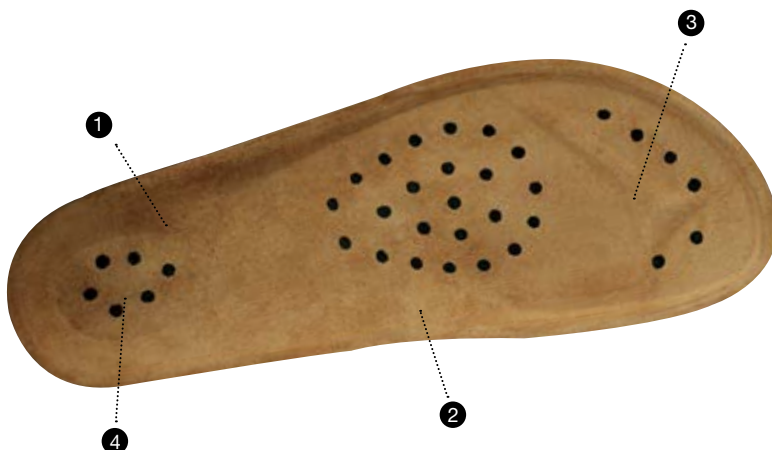
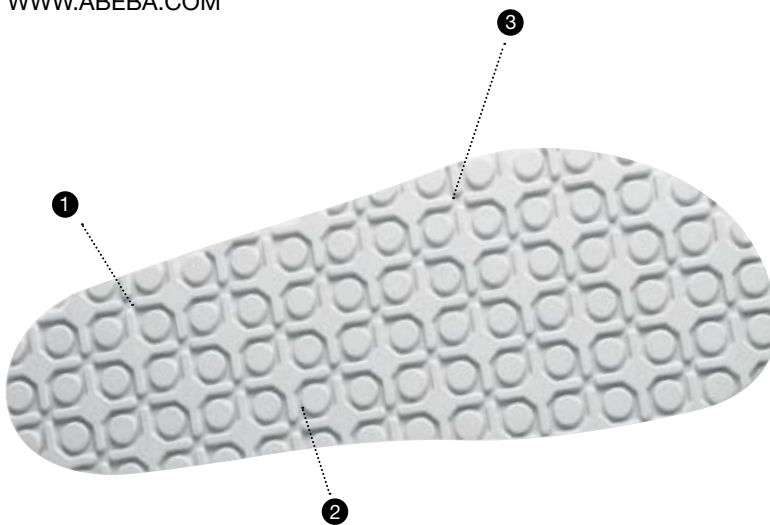
## MULES AND CLOGS WITH CORK FOOTBED

The footbeds of the ABEBA „Nature“ range are characterised by high-value raw materials: natural cork and top quality natural latex allow the wearer to enjoy exceptionally high comfort, flexibility and an optimized cushioning effect.

Deep heel cup, cross support of the arch, inner and outer length support, toe gripper and the footbed edging result in excellent footing, promoting the natural standing position and facilitate to roll your feet from heel to toe. Your bodyweight is dispersed on the entire foot due to the anatomical shape of the footbed. The first class leather covering is especially skin-friendly and humidity absorbing. We take care of your safety as well as your comfort needs. The slip resistant walking sole made from special rubber features acid and base resistance as well as resistance to oil and fuel.

Feel naturally comfortable

[WWW.ABEBA.COM](http://WWW.ABEBA.COM)



### HIGHLIGHTS

- Cork footbed, leather covered
- Sanitized® treated
- TÜV GS - tested safety

### TECHNOLOGY

#### ANTISTATIC/ ESD DISSIPATIVE

according to EN 61340

#### ATEX

according to EN 61340-4-3,  
climate class 1

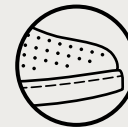
#### HEEL STRAP

fixed with adjustable fastening



#### PERFORATION

for good ventilation



### OUTSOLE

#### 1 SRC slip resistance

according to EN ISO 20347:2012

#### 2 Rubber sole

abrasion resistant

#### 3 Resistant

to acid, base and fuel

### CORK FOOTBED

#### 1 Skin-friendly

#### 2 Respiration absorbing

#### 3 Toe gripper

#### 4 Shock absorption system



**OB**

**8011**



**4011**

CE, EN ISO 20347:2012 OB, A, FO, SRC  
Size 34-43 | smooth leather white | 2 instep straps, adjustable | buckle fastening



**OB**

**8020**



**4020**

CE, EN ISO 20347:2012 OB, A, FO, SRC  
Size 34-43 | pull-up leather black | 2 instep straps, adjustable | buckle fastening



**OB**

**8022**



**4022**

CE, EN ISO 20347:2012 OB, A, FO, SRC  
Size 34-43 | pull-up leather aubergine | 2 instep straps, adjustable | buckle fastening



**4086**

CE, EN ISO 20347:2012 OB, A, FO, SRC  
Size 34-48 | velour leather ocean | 2 instep straps, adjustable | buckle fastening





**4080**

CE, EN ISO 20347:2012 OB, A, FO, SRC  
 Size 34-48 | smooth leather white | 2 instep straps, adjustable | velcro fastening



**4085**

CE, EN ISO 20347:2012 OB, A, FO, SRC  
 Size 34-48 | smooth leather black | 2 instep straps, adjustable | velcro fastening



**8096**

CE, EN ISO 20347:2012 OB, A, FO, SRC  
 Size 34-48 | velour leather ocean | heel strap non-foldable, adjustable | 2 instep straps, adjustable | buckle fastening



**4096**

CE, EN ISO 20347:2012 OB, A, FO, SRC  
 Size 34-48 | velour leather ocean | heel strap non-foldable, adjustable | 2 instep straps, adjustable | buckle fastening



**4090**

CE, EN ISO 20347:2012 OB, A, FO, SRC  
 Size 34-48 | smooth leather white | heel strap non-foldable, adjustable | 2 instep straps, adjustable | velcro fastening



OB

8040



4040

CE, EN ISO 20347:2012 OB, A, FO, SRC  
Size 34-48 | smooth leather white | heel strap non-foldable, adjustable | instep strap adjustable | buckle fastening



OB

8045



4055

CE, EN ISO 20347:2012 OB, A, FO, SRC  
Size 34-48 | smooth leather black | heel strap non-foldable, adjustable | instep strap adjustable | buckle fastening



4045

CE, EN ISO 20347:2012 OB, A, FO, SRC  
Size 34-48 | smooth leather dark blue, perforated | heel strap non-foldable, adjustable | instep strap adjustable | buckle fastening



4050

CE, EN ISO 20347:2012 OB, A, FO, SRC  
Size 34-48 | smooth leather white, perforated | heel strap non-foldable, adjustable | instep strap adjustable | buckle fastening



**OB**

**8060**

**OB**



**4060**

CE, EN ISO 20347:2012 OB, A, FO, SRC  
 Size 34-43 | smooth leather white | heel strap non-foldable, adjustable | instep strap adjustable | velcro fastening



**OB**

**8061**

**OB**



**4061**

CE, EN ISO 20347:2012 OB, A, FO, SRC  
 Size 34-43 | smooth leather black | heel strap non-foldable, adjustable | instep strap adjustable | velcro fastening



**OB**



**4075**

CE, EN ISO 20347:2012 OB, A, FO, SRC  
 Size 34-48 | grained leather black, perforated | lining leather | heel strap non-foldable, adjustable | instep strap adjustable | velcro fastening



**OB**



**4070**

CE, EN ISO 20347:2012 OB, A, FO, SRC  
 Size 34-48 | grained leather white, perforated | lining leather | heel strap non-foldable, adjustable | instep strap adjustable | velcro fastening

Cushion



# AIR CUSHION

## TRENDY RETRO STYLE ON AN EXTREMELY LIGHT SOLE

With the „air cushion“ range we proof that occupational shoes are not only functional and comply to the standards, they also convince with their stylish appearance.

With this range, we focus on safety as well as wearing comfort. The shoe is exceptionally light thanks to the permanently elastic softfoam of the slip resistant PU walking sole. A comfortable fit and an anatomically shaped insole gets you through the day stress-free.

The processing of high quality leather and lining materials paired with contemporary design brings out our quality standards.

WWW.ABEBA.COM



### HIGHLIGHTS

- Replaceable insole
- Extremely light
- Sanitized® treated

### TECHNOLOGY

#### ANTISTATIC/ ESD DISSIPATIVE

according to EN 61340

#### ATEX

according to EN 61340-4-3,  
climate class 1

### OUTSOLE

#### 1\_SRA slip resistance

according to ISO 20347:2012

#### 2\_Air cushion PU-sole

shock absorption

#### 3\_ Resistant

to fuel

#### 4\_Extremely light sole

wearing comfort

### INSOLE

#### REPLACEABLE INSOLE

art. 3551,  
for more information see notes on  
page 112-113



AIR CUSHION



01

2700



32700

CE, EN ISO 20347:2012 O1, SRA  
Size 39-47 | grained leather white | lining, respiration absorbing |  
replaceable insole (art. 3551)



01

2710



32710

CE, EN ISO 20347:2012 O1, SRA  
Size 39-47 | grained leather black | lining, respiration absorbing |  
replaceable insole (art. 3551)





01



**32300**

CE, EN ISO 20347:2012 O1, SRA  
 Size 35-47 | grained leather white, perforated | lining, respiration  
 absorbing | replaceable insole (art. 3551)



01



**32310**

CE, EN ISO 20347:2012 O1, SRA  
 Size 39-47 | grained leather black, perforated | lining, respiration  
 absorbing | replaceable insole (art. 3551)



01

 micro

**2370**

01



 micro

**32370**

CE, EN ISO 20347:2012 O1, SRA  
 Size 35-47 | microfiber white | instep area with elastic band |  
 integrated footbed | decontaminable





**AIR CUSHION**



**01**

**2600**

**01**



**32600**

CE, EN ISO 20347:2012 O1, SRA  
Size 35-47 | grained leather white | lining, respiration absorbing |  
replaceable insole (art. 3551)



**01**

**2610**

**01**



**32610**

CE, EN ISO 20347:2012 O1, SRA  
Size 35-47 | grained leather black | lining, respiration absorbing |  
replaceable insole (art. 3551)







01

**2650**

01



**32650**

CE, EN ISO 20347:2012 O1, SRA  
 Size 35-47 | grained leather black | lining with Silver Point |  
 replaceable insole (art. 3551)



01

**2620**

01



**32620**

CE, EN ISO 20347:2012 O1, SRA  
 Size 35-47 | grained leather white | lining with Silver Point |  
 replaceable insole (art. 3551)



**light**



# LIGHT

## THE RIGHT CHOICE

With the „light“ range we offer the right occupational shoe for everyone who emphasises on technically sophisticated footwear and makes no compromises between quality, comfort and visual appearance.

Thanks to the characteristic PU sole the shoe is light and flexible but also sturdy and the build in shock absorber provides an ideal cushioning effect. With this range we have developed a shoe with a moderate heel gradient which relieves strains on joints, heel and back muscles. Our uniquely designed replaceable insoles offer a high wearing comfort.

We equipped the models with a special lining: Silverpoint provides an antibacterial protection by built in silver ions with an odor reducing and moisture absorbing effect.

Technology on „light“ soles.

[WWW.ABEBA.COM](http://WWW.ABEBA.COM)



## HIGHLIGHTS

- Special lining, respiration absorbing Silver ions, Silver fibers or Comfortemp®
- Sanitized® treated

## TECHNOLOGY

### ANTISTATIC/ ESD DISSIPATIVE

according to EN 61340

### ATEX

according to EN 61340-4-3, climate class 1

## OUTSOLE

### 1\_SRA slip resistance

according to EN ISO 20347:2012

### 2\_PU sole

slip resistance, shock absorption, lightweight

### 3\_ Resistant

to fuel

### 4\_Shock absorber

cushioning

## INSOLES

### REPLACEABLE ACC WAVE (AIR CLIMA COMFORT)

art. 3558 (open),

art. 3559 (closed),

for more information see notes on page 112-113



All styles of our light range are suitable for orthopedic insoles **ORTHOstat** and **SENSOstat**.



All styles of the light range are suitable for heel and foot lift.



LIGHT



OB

1141



31141

CE, EN ISO 20347:2012 OB, A, E, FO, SRA  
Size 35-48 | smooth leather white | lining with Silver Point | heel strap foldable, adjustable | instep area with elastic band | replaceable acc Wave insole (art. 3558)



OB

1142



31142

CE, EN ISO 20347:2012 OB, A, E, FO, SRA  
Size 35-48 | smooth leather black | lining with Silver Point | heel strap foldable, adjustable | instep area with elastic band | replaceable acc Wave insole (art. 3558)



OB

1135



31135

CE, EN ISO 20347:2012 OB, A, E, FO, SRA  
Size 35-48 | smooth leather black | lining with Silver Point | heel strap non-foldable, adjustable | instep area with elastic band | replaceable acc Wave insole (art. 3558)



OB

1130



31130

CE, EN ISO 20347:2012 OB, A, E, FO, SRA  
Size 35-48 | smooth leather white | lining with Silver Point | heel strap non-foldable, adjustable | instep area with elastic band | replaceable acc Wave insole (art. 3558)





**OB**

**1178**

**OB**



**31178**

CE, EN ISO 20347:2012 OB, A, E, FO, SRA  
 Size 35-43 | smooth leather white/ grey | lining with Silver Point | heel strap non-foldable, adjustable, removable | instep area with lacing | replaceable acc Wave insole (art. 3558)



**OB**

A<sup>micro</sup>

**1180**

**OB**



A<sup>micro</sup>

**31180**

CE, EN ISO 20347:2012 OB, A, E, FO, SRA  
 Size 35-43 | microfiber white | lining with Silver fibers | heel strap non-foldable, adjustable, removable | instep area with lacing | replaceable acc Wave insole (art. 3558)



**OB**

**1163**

**OB**



**31163**

CE, EN ISO 20347:2012 OB, A, E, FO, SRA  
 Size 35-43 | smooth leather white/ light blue | lining with Silver Point | heel strap non-foldable, adjustable | instep area with lacing | reflective stripes | replaceable acc Wave insole (art. 3558)



**OB**

**1160**

**OB**



**31160**

CE, EN ISO 20347:2012 OB, A, E, FO, SRA  
 Size 35-43 | smooth leather white/ red | lining with Silver Point | heel strap non-foldable, adjustable | instep area with lacing | reflective stripes | replaceable acc Wave insole (art. 3558)





LIGHT



01

1131

01



31131

CE, EN ISO 20347:2012 O1, FO, SRA  
Size 35-48 | smooth leather white with grey **breathable textile inlays** | lining with Silver ions | double velcro fastening | replaceable acc Wave insole (art. 3559)



01

1136

01



31136

CE, EN ISO 20347:2012 O1, FO, SRA  
Size 35-48 | smooth leather black with grey **breathable textile inlays** | lining with Silver ions | double velcro fastening | replaceable acc Wave insole (art. 3559)





01

1120

01



31120

CE, EN ISO 20347:2012 O1, FO, SRA  
 Size 35-48 | smooth leather white, perforated | lining with Silver Point | double velcro fastening | reflective stripes | replaceable acc Wave insole (art. 3559)



01

1121

01



31121

CE, EN ISO 20347:2012 O1, FO, SRA  
 Size 35-48 | smooth leather black, perforated | lining with Silver Point | double velcro fastening | reflective stripes | replaceable acc Wave insole (art. 3559)



01

1158

01



31158

CE, EN ISO 20347:2012 O1, FO, SRA  
 Size 35-48 | smooth leather white with **breathable textile inlays** | lining with Silver Point | replaceable acc Wave insole (art. 3559)



02

1151

02



31151

CE, EN ISO 20347:2012 O2, FO, SRA  
 Size 35-48 | smooth leather white | temperature regulating lining **Comfortemp**® with mPCM-Technology | replaceable acc Wave insole (art. 3559)





LIGHT



02

1132



31132

CE, EN ISO 20347:2012 O2, FO, SRA  
Size 35-48 | smooth leather white | lining with Silver ions | instep area with elastic band | replaceable acc Wave insole (art. 3559)



02

1137



31137

CE, EN ISO 20347:2012 O2, FO, SRA  
Size 35-48 | smooth leather black | lining with Silver ions | instep area with elastic band | replaceable acc Wave insole (art. 3559)



02

A<sup>®</sup>micro

1129



A<sup>®</sup>micro

31129

CE, EN ISO 20347:2012 O2, FO, SRA  
Size 35-48 | microfiber black | lining with Silver fibers | instep area with elastic band | replaceable acc Wave insole (art. 3559)



02

A<sup>®</sup>micro

1128



A<sup>®</sup>micro

31128

CE, EN ISO 20347:2012 O2, FO, SRA  
Size 35-48 | microfiber white | lining with Silver fibers | instep area with elastic band | replaceable acc Wave insole (art. 3559)







02

1133

02



31133

CE, EN ISO 20347:2012 O2, FO, SRA  
 Size 35-48 | smooth leather white | lining with Silver ions | reflective stripes | replaceable acc Wave insole (art. 3559)



02

1138

02



31138

CE, EN ISO 20347:2012 O2, FO, SRA  
 Size 35-48 | smooth leather black | lining with Silver ions | reflective stripes | replaceable acc Wave insole (art. 3559)



02

A<sup>®</sup>micro

1127

02



A<sup>®</sup>micro

31127

CE, EN ISO 20347:2012 O2, FO, SRA  
 Size 35-48 | microfiber black | lining with Silver fibers | replaceable acc Wave insole (art. 3559)



02

A<sup>®</sup>micro

1126

02



A<sup>®</sup>micro

31126

CE, EN ISO 20347:2012 O2, FO, SRA  
 Size 35-48 | microfiber white | lining with Silver fibers | replaceable acc Wave insole (art. 3559)



uni6



# UNI6

EXPERIENCE THE FUTURE!

„Uni6“ combines design and technology to a perfect multifunctional shoe which is dedicated to the lifestyle of a sophisticated wearer by its sporty style, its excellent fit, by the choice of high-tech materials and a young and trendy sole design. For the design of the double layer outsole we took into account the most recent developments of work and sports medicine. The soft PU midsole ensures an even cushioning effect on the entire sole and the stabilization of the midfoot. The TPU outsole impresses technically by its ideal slip and abrasion resistance. Also for the upper we have chosen the most recent developments of materials. Hydrophobic leathers as well as a specific microfiber with breathable and at the same time water-repellent features are making these shoes especially suitable for wet areas. New innovative lining materials and the replaceable acc Wave insole ensure the best compensation of temperature and moisture for a perfect foot climate.

WWW.ABEBA.COM



## HIGHLIGHTS

- Special lining, respiration absorbing
- Soft PU midsole
- Sanitized® treated

## TECHNOLOGY

### ANTISTATIC/ ESD DISSIPATIVE

according to EN 61340

### ATEX

according to EN 61340-4-3, climate class 1

## OUTSOLE

### 1 SRC slip resistance

according to EN ISO 20347:2012

### 2 TPU sole

abrasion resistant

### 3 Resistant

to animal fats, oil and fuel

### 4 Flexing zones

walking comfort

## INSOLE

### REPLACEABLE ACC WAVE (AIR CLIMA COMFORT)

art. 3575,  
for more information see notes on  
page 112-113



All styles of our uni6 range are suitable for orthopedic insoles **ORTHOstat** and **SENSOstat**.



UNI6

NEW



01

A<sup>®</sup>micro

6795

01



A<sup>®</sup>micro

36795

CE, EN ISO 20347:2012 O1, FO, SRC

Size 35-48 | microfiber white | lining, respiration absorbing | instep area with velcro fastening | replaceable acc Wave insole (art. 3575)



NEW



01

A<sup>®</sup>micro

6796

01



A<sup>®</sup>micro

36796

CE, EN ISO 20347:2012 O1, FO, SRC

Size 35-48 | microfiber black | lining, respiration absorbing | instep area with velcro fastening | replaceable acc Wave insole (art. 3575)





NEW



02

A<sup>®</sup> micro

6740

02

A<sup>®</sup> micro

36740

CE, EN ISO 20347:2012 O2, FO, SRC

Size 35-48 | microfiber white | lining with Silver Point | instep area with elastic band | replaceable acc Wave insole (art. 3575)



NEW



02

A<sup>®</sup> micro

6741

02

A<sup>®</sup> micro

36741

CE, EN ISO 20347:2012 O2, FO, SRC

Size 35-48 | microfiber black | lining with Silver Point | instep area with elastic band | replaceable acc Wave insole (art. 3575)





UNIG



01

6760

01

6761

01



36760

01



36761

CE, EN ISO 20347:2012 O1, FO, SRC  
Size 35-48 | functional leather white with honeycomb pattern |  
water-repellent | scratch-proof | lining with Silver Point |  
replaceable acc Wave insole (art. 3575)



CE, EN ISO 20347:2012 O1, FO, SRC  
Size 35-48 | functional leather black with honeycomb pattern |  
water-repellent | scratch-proof | lining with Silver Point |  
replaceable acc Wave insole (art. 3575)





01

**6762**

01



**36762**

CE, EN ISO 20347:2012 O1, FO, SRC  
 Size 35-48 | functional leather blue with honeycomb pattern |  
 water-repellent | scratch-proof | lining with Silver Point |  
 replaceable acc Wave insole (art. 3575)



01

**6764**

01



**36764**

CE, EN ISO 20347:2012 O1, FO, SRC  
 Size 35-48 | functional leather red with honeycomb pattern |  
 water-repellent | scratch-proof | lining with Silver Point |  
 replaceable acc Wave insole (art. 3575)



01

**6763**

01



**36763**

CE, EN ISO 20347:2012 O1, FO, SRC  
 Size 35-48 | functional leather navy blue | water-repellent |  
 scratch-proof | lining with Silver Point | replaceable acc Wave  
 insole (art. 3575)





01

6731



36731

CE, EN ISO 20347:2012 O1, FO, SRC  
Size 35-48 | smooth leather black, **microperforated** | lining with Silver Point | reflective stripes | replaceable acc Wave insole (art. 3575)



01

6730



36730

CE, EN ISO 20347:2012 O1, FO, SRC  
Size 35-48 | smooth leather white, **microperforated** | lining with Silver Point | reflective stripes | replaceable acc Wave insole (art. 3575)



01

6721



36721

CE, EN ISO 20347:2012 O1, FO, SRC  
Size 35-48 | velours black with **breathable textile inlays** | lining with Silver Point | reflective stripes | replaceable acc Wave insole (art. 3575)



01

6720



36720

CE, EN ISO 20347:2012 O1, FO, SRC  
Size 35-48 | smooth leather white with **breathable textile inlays** | lining with Silver Point | reflective stripes | replaceable acc Wave insole (art. 3575)







02

**6770**

02

**6771**

02



**36770**

02



**36771**

CE, EN ISO 20347:2012 O2, FO, SRC  
 Size 35-48 | smooth leather white | lining with Silver Point |  
 reflective stripes | replaceable acc Wave insole (art. 3575)

CE, EN ISO 20347:2012 O2, FO, SRC  
 Size 35-48 | smooth leather black | lining with Silver Point |  
 reflective stripes | replaceable acc Wave insole (art. 3575)







UNIG





**02**  micro **6780**

**02**   micro **36780**

CE, EN ISO 20347:2012 O2, FO, SRC  
Size 35-48 | microfiber white | lining with Silver Point | replaceable  
acc Wave insole (art. 3575)



**02**  micro **6781**

**02**   micro **36781**

CE, EN ISO 20347:2012 O2, FO, SRC  
Size 35-48 | microfiber black | lining with Silver Point | replaceable  
acc Wave insole (art. 3575)





**02**  **6784**

**02**   **36784**

CE, EN ISO 20347:2012 O2, FO, SRC  
 Size 35-48 | microfiber grey/ yellow | lining with Silver Point |  
 replaceable acc Wave insole (art. 3575)






**02**  **6785**

**02**   **36785**

CE, EN ISO 20347:2012 O2, FO, SRC  
 Size 35-48 | microfiber grey/ black | lining with Silver Point |  
 replaceable acc Wave insole (art. 3575)






**02**  **6783**

**02**   **36783**

CE, EN ISO 20347:2012 O2, FO, SRC  
 Size 35-48 | microfiber grey/ red | lining with Silver Point |  
 replaceable acc Wave insole (art. 3575)



**02**  **6782**

**02**   **36782**

CE, EN ISO 20347:2012 O2, FO, SRC  
 Size 35-48 | microfiber grey/ blue | lining with Silver Point |  
 replaceable acc Wave insole (art. 3575)





01

6700



36700

CE, EN ISO 20347:2012 O1, FO, SRC  
 Size 35-48 | smooth leather white with **breathable textile inlays** | lining, respiration absorbing | reflective stripes | replaceable acc Wave insole (art. 3575)



01

6701



36701

CE, EN ISO 20347:2012 O1, FO, SRC  
 Size 35-48 | velours black with **breathable textile inlays** | lining, respiration absorbing | reflective stripes | replaceable acc Wave insole (art. 3575)





01

6711

01



36711

CE, EN ISO 20347:2012 O1, FO, SRC  
 Size 35-48 | velours black | lining, respiration absorbing |  
 replaceable acc Wave insole (art. 3575)



02

6752

02



36752

CE, EN ISO 20347:2012 O2, FO, SRC  
 Size 35-48 | smooth leather black/ brown | lining, respiration  
 absorbing | reflective stripes | replaceable acc Wave insole  
 (art. 3575)



02

6750

02



36750

CE, EN ISO 20347:2012 O2, FO, SRC  
 Size 35-48 | smooth leather white | lining, respiration absorbing |  
 replaceable acc Wave insole (art. 3575)



02

6751

02



36751

CE, EN ISO 20347:2012 O2, FO, SRC  
 Size 35-48 | smooth leather black | lining, respiration absorbing |  
 replaceable acc Wave insole (art. 3575)



# Reflexor



# REFLEXOR®

## THE SHOE FOR AMBITIOUS INDIVIDUALISTS

Our „Reflexor®“ styles are made exclusively with premium calf leather and microfiber lining. Their distinguishing characteristic is the handmade high quality stitching.

The shoes on page 88 - 91 are even delivered with 2 replaceable footbeds. The active Reflexor® Massage footbed stimulates the foot's reflex zones by its knobs and enhances the blood circulation. You may also choose the smooth comfort footbed, covered with finest leather.

We also care about your safety. All Reflexor soles have got a medium heel with a wide step surface.

Your wellness at work.

WWW.ABEBA.COM



## HIGHLIGHTS

- Special lining, respiration absorbing
- Massage active-footbed

## TECHNOLOGY

**ANTISTATIC/ ESD DISSIPATIVE**  
according to EN 61340

**HAND-SEWN SEAM**  
for best walking comfort



## OUTSOLE

- 1\_SRB slip resistance**  
according to EN ISO 20347:2012
- 2\_PU sole**  
extremely light
- 3\_Resistant**  
to fuel

## INSOLES

### REPLACEABLE REFLEXOR® INSOLES

- 1**\_art. 3567 white, size 36-42,  
art. 3568 grey, size 36-42
- 2**\_art. 3569 white, size 40-46,  
art. 3570 grey, size 40-46
- 3**\_art. 3565, size 36-42,  
art. 3566, size 40-46

for more information see notes  
on page 113



Orthopedic insoles  
**ORTHOstat** and  
**SENSOstat**  
partially possible



# REFLEXOR® MEN



**OB**

**5840**



**35840**

CE, EN ISO 20347:2012 OB, A, E, SRB  
Size 40-46 | smooth leather black, perforated | lining, respiration absorbing | heel strap foldable, adjustable | instep area with elastic band | 2 replaceable Reflexor® insoles (art. 3566/ 3570)



**OB**

**5830**



**35830**

CE, EN ISO 20347:2012 OB, A, E, SRB  
Size 40-46 | smooth leather white, perforated | lining, respiration absorbing | heel strap foldable, adjustable | instep area with elastic band | 2 replaceable Reflexor® insoles (art.r. 3566/ 3569)





**OB****5890****OB****35890**

CE, EN ISO 20347:2012 OB, A, E, SRB  
 Size 40-46 | velours-/ smooth leather combination black | lining, respiration absorbing | heel strap non-foldable, adjustable | instep area with double velcro fastening | 2 replaceable Reflexor® insoles (art. 3566/ 3570)


**DGUV**  
 112-191  
 (BGR 191)
**O1****5750****O1****35750**

CE, EN ISO 20347:2012 O1, SRB  
 Size 40-46 | smooth leather white | lining, respiration absorbing | instep area with elastic band | 2 replaceable Reflexor® insoles (art. 3566/ 3569)


**DGUV**  
 112-191  
 (BGR 191)
**O1****5700****O1****35700**

CE, EN ISO 20347:2012 O1, SRB  
 Size 40-46 | smooth leather white | lining, respiration absorbing | 2 replaceable Reflexor® insoles (art.r. 3566/ 3569)


**DGUV**  
 112-191  
 (BGR 191)
**O1****5710****O1****35710**

CE, EN ISO 20347:2012 O1, SRB  
 Size 40-46 | smooth leather black | lining, respiration absorbing | 2 replaceable Reflexor® insoles (art. 3566/ 3570)


**DGUV**  
 112-191  
 (BGR 191)



# REFLEXOR® LADIES



OB

6990

OB



36990

CE, EN ISO 20347:2012 OB, A, E, SRB  
Size 36-42 | velours-/ smooth leather combination black | lining, respiration absorbing | heel strap non-foldable, adjustable | instep area with double velcro fastening | 2 replaceable Reflexor® insoles (art. 3565/ 3568)



DGUV  
112-191  
(BGR 191)



OB

6912

OB



36912

CE, EN ISO 20347:2012 OB, A, E, SRB  
Size 36-42 | smooth leather black | lining, respiration absorbing | triple velcro fastening | 2 replaceable Reflexor® insoles (art. 3565/ 3568)



DGUV  
112-191  
(BGR 191)



OB

6902

OB



36902

CE, EN ISO 20347:2012 OB, A, E, SRB  
Size 36-42 | smooth leather white | lining, respiration absorbing | triple velcro fastening | 2 replaceable Reflexor® insoles (art. 3565/ 3567)



DGUV  
112-191  
(BGR 191)

**OB****6903****OB****36903**

CE, EN ISO 20347:2012 OB, A, E, SRB  
 Size 36-42 | smooth leather white | lining, respiration absorbing |  
 heel strap foldable, adjustable | instep area with elastic band |  
 2 replaceable Reflexor® insoles (art. 3565/ 3567)

**OB****6913****OB****36913**

CE, EN ISO 20347:2012 OB, A, E, SRB  
 Size 36-42 | smooth leather black | lining, respiration absorbing |  
 heel strap foldable, adjustable | instep area with elastic band |  
 2 replaceable Reflexor® insoles (art. 3565/ 3568)

**O1****6910****O1****36910**

CE, EN ISO 20347:2012 O1, SRB  
 Size 36-42 | smooth leather black | lining, respiration absorbing |  
 2 replaceable Reflexor® insoles (art. 3565/ 3568)

**O1****6900****O1****36900**

CE, EN ISO 20347:2012 O1, SRB  
 Size 36-42 | smooth leather white | lining, respiration absorbing |  
 2 replaceable Reflexor® insoles (art. 3565/ 3567)





**REFLEXOR®**



**1094**



**31094**

Size 36-42 | smooth leather white | lining, respiration absorbing | integrated Reflexor® massage footbed



**1092**



**31092**

Size 36-42 | smooth leather black | lining, respiration absorbing | integrated Reflexor® massage footbed





**1064**



**31064**

Size 36-42 | smooth leather white/ black | lining, respiration absorbing | heel strap non-foldable, adjustable | instep area with elastic band | integrated Reflexor® massage footbed



**6610**



**36610**

Size 36-42 | smooth leather black | lining, respiration absorbing | instep strap adjustable | integrated Reflexor® massage footbed

Reflexor  
COMFORT



# REFLEXOR® COMFORT



## HIGHLIGHTS

- Special lining, respiration absorbing
- Comfort-width

## TECHNOLOGY

**ANTISTATIC/ ESD DISSIPATIVE**  
according to EN 61340

**HAND-SEWN SEAM**  
for best walking comfort



## OUTSOLE

**1\_SRB slip resistance**  
according to EN ISO 20347:2012

**2\_PU sole**  
extremely light

## INSOLES

**REFLEXOR® MASSAGE**  
**active-footbed, replaceable**  
art. 3572 white,  
for more information see notes  
on page 112-113





OB

6809

OB



36809

CE, EN ISO 20347:2012 OB, A, E, SRB  
Size 36-43 | smooth leather white | lining, respiration absorbing |  
double velcro fastening | replaceable Reflexor® insole (art. 3572)



OB

6819

OB



36819

CE, EN ISO 20347:2012 OB, A, E, SRB  
Size 36-43 | smooth leather black | lining, respiration absorbing |  
double velcro fastening | replaceable Reflexor® insole (art. 3572)



OB

6813

OB



36813

CE, EN ISO 20347:2012 OB, A, E, SRB  
Size 36-43 | smooth leather black | lining, respiration absorbing |  
heel strap foldable, adjustable | instep area with elastic band |  
replaceable Reflexor® insole (art. 3572)



OB

6803

OB



36803

CE, EN ISO 20347:2012 OB, A, E, SRB  
Size 36-43 | smooth leather white | lining, respiration absorbing |  
heel strap foldable, adjustable | instep area with elastic band |  
replaceable Reflexor® insole (art. 3572)





**OB****6874****OB****36874**

CE, EN ISO 20347:2012 OB, A, E, SRB  
 Size 36-43 | smooth leather white | lining, respiration absorbing |  
 heel strap non-foldable, adjustable | instep area with elastic band |  
 replaceable Reflexor® insole (art. 3572)

**OB****6872****OB****36872**

CE, EN ISO 20347:2012 OB, A, E, SRB  
 Size 36-43 | velours black | lining, respiration absorbing | heel  
 strap non-foldable, adjustable | instep area with elastic band |  
 replaceable Reflexor® insole (art. 3572)

**OB****6886**

CE, EN ISO 20347:2012 OB, A, E, SRB  
 Size 36-43 | smooth leather black | lining, respiration absorbing |  
 heel strap non-foldable, padded | instep area with lacing |  
 replaceable Reflexor® insole (art. 3572)



**SERVICE**



**3000**

Size 34-42 | smooth leather black | ankle support padded | instep area with lacing | comfort footbed | heel 45 mm

**3081**

Size 36-42 | smooth leather black | lining, respiration absorbing | heel strap non-foldable, cushioned | instep area with lacing | integrated Reflexor® massage footbed

**01****3030**

CE, EN ISO 20347:2012 O1, FO, SRC  
Size 36-42 | smooth leather black | lining, respiration absorbing | velcro fastening over instep | integrated acc footbed

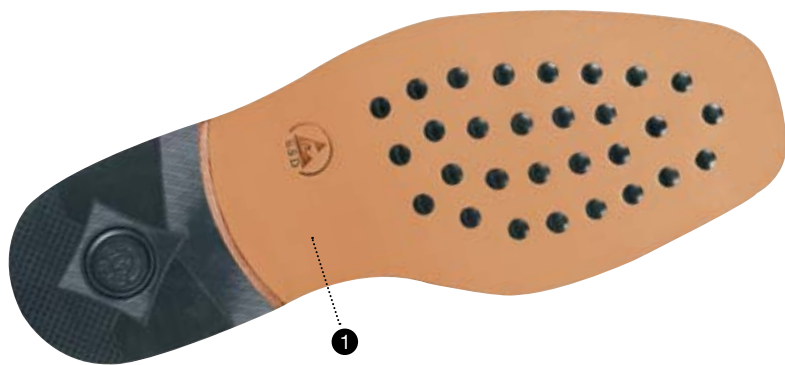
**7401**

Size 36-42 | calf leather black | integrated acc footbed

**TIP**

ALSO EXCELLENT FOR THE USE  
IN THE CATERING SECTOR ARE OUR  
REFLEXOR® COMFORT STYLES  
ON PAGES 96 - 97.

# MANAGER



## HIGHLIGHT

- Heel totally composed of leather
- Calf leather upper and lining
- ESD dissipative

## OUTSOLE

### 1\_Leather outsole

ESD compliant according to EN 61340



**3120**

CE  
Size 39-46 | calf leather black | lining calf leather |  
top layer calf leather



**3110**

CE  
Size 39-46 | calf leather black | lining calf leather |  
top layer calf leather



**3130**

CE  
Size 39-46 | calf leather black | lining calf leather |  
top layer calf leather



**3121**

CE  
Size 39-46 | calf leather brown | lining calf leather |  
top layer calf leather

**BUSINESS  
LADY**





**3980**

Size 36-42 | smooth leather black | lining calf leather | instep area with lacing | heel 60 mm



**3990**

Size 36-42 | smooth leather black | lining calf leather | heel 60 mm



**3940**

Size 36-42 | smooth leather black | lining calf leather | heel 60 mm



**3920**

Size 36-42 | smooth leather black | lining calf leather | instep area with elastic band | integrated acc footbed | heel 40 mm

# BUSINESS MEN



**32922**

CE, EN ISO 20347:2012 OB, A, SRA  
Size 39-47 | smooth leather black | insole leather | lining calf  
leather | rubber outsole



**32923**

CE, EN ISO 20347:2012 OB, A, SRA  
Size 39-47 | smooth leather black | insole leather | lining calf  
leather | rubber outsole





**32450**

CE, EN ISO 20347:2012 O1, SRA  
 Size 40-47 | smooth leather black | lining, respiration absorbing |  
 insole leather | outsole TPU



**32430**

CE, EN ISO 20347:2012 O1, SRA  
 Size 40-47 | smooth leather black | lining, respiration absorbing |  
 insole leather | outsole TPU



**32440**

CE, EN ISO 20347:2012 O1, SRA  
 Size 40-47 | smooth leather black | lining, respiration absorbing |  
 insole leather | outsole TPU



# CLEAN ROOM





**3900**

Size\* Gr. 1 - Gr. 5 | white | upper integrity 1750 antibacterial | artificial leather sole | overshoe with elastic instep



**3910**

Size\* Gr. 1 - Gr. 5 | light blue | upper integrity 1750 antibacterial | artificial leather sole | overshoe with elastic instep

\*Size:

Gr. 1 = 36-37 | Gr. 2 = 38-39 | Gr. 3 = 40-43 | Gr. 4 = 44-46 | Gr. 5 = 47-48



**individual solutions on request**

The special purpose shoe shown here is only an example for individual solutions. Tell us about your requirements and together we will find solutions best suited to meet your demands within a short time. Just give us a call!



**3620**

CE, EN ISO 20347:2012 OB, A, E, SRA  
Size 35-47 | microfiber white | fixe gaitor, cleanroom textile

**AUTO-  
CALVABLE**



# AUTOCLAVABLE

FOR MAXIMUM HYGIENE

Reusable and temperature-stable clothes and equipment are processed by autoclaving to kill all germs and bacteria. This is done mainly in medical areas, microbiological or bio molecular research institutes as well as in the food and pharmaceutical industry.

The ABEBA autoclavable clogs may be treated by autoclaving at 135°C 5 min to meet the requirements of the necessary sterilising level. They offer a slip resistant walking sole and are ESD dissipative according to EN 61340.

A foldable heel strap assures stability while standing.

WWW.ABEBA.COM



### TIP

TO AVOID ANY DAMAGES OF THE SHOES PLEASE MAKE SURE THEY ARE NOT TOUCHING EACH OTHER DURING THE AUTOCLAVING PROCESS.



## HIGHLIGHTS

- Autoclavable special material
- Autoclavable at 135°C, 5 min (no additives)



- Washable at 60°C (no additives)



## TECHNOLOGY

### ANTISTATIC/ ESD DISSIPATIVE

according to EN 61340

### HEEL STRAP

adjustable, foldable



## OUTSOLE

### 1\_SRC slip resistance

according to EN ISO 20347:2012

### 2\_Sole

abrasion resistant



**AUTOCLAVABLE**



**OB**

**9600**

**OB**



**39600**

CE, EN ISO 20347:2012 OB, A, E, SRC  
Double sizes\* 35/**36** - 45/**46** | special material white | heel strap  
foldable, adjustable | autoclavable



**OB**

**9610**

**OB**



**39610**

CE, EN ISO 20347:2012 OB, A, E, SRC  
Double sizes\* 35/**36** - 45/**46** | special material blue | heel strap  
foldable, adjustable | autoclavable





AUTOCLAVABLE



OB

9620

OB



39620

CE, EN ISO 20347:2012 OB, A, E, SRC

Double sizes\* 35/**36** - 45/**46** | special material green | heel strap foldable, adjustable | autoclavable



OB

9630

OB



39630

CE, EN ISO 20347:2012 OB, A, E, SRC

Double sizes\* 35/**36** - 45/**46** | special material orange | heel strap foldable, adjustable | autoclavable



## INFORMATION

### \*Double sizes:

Please use the size in bold when placing your order.

35/**36**, 37/**38**, 39/**40**,

41/**42**, 43/**44**, 45/**46**



# INSOLES

## ACC WAVE

replaceable acc Wave insole (air clima comfort) | relieves muscles, ligaments and spine | cushioning over the whole surface | climate regulating and comfortable | antistatic/ ESD dissipative according to EN 61340

3558 »light«	open	Size 35–48
3559 »light«	closed	Size 35–48
3574 »dynamic«		Size 35–48
3573 »easy«		Size 35–48
3575 »uni6«		Size 35–48



## ACC WAVE

An insole with high wearing comfort. It supports the natural rolling movement of the foot and ensures an equal spreading of the pressure over the whole surface. The cushioning effect of the complete insole relieves muscles, ligaments, joints and the spine. Additionally the insole offers a constant circulation of air inside the shoe which keep your feet cooler and dry.





## AIR CUSHION

replaceable insole for shoes with air cushion sole | antistatic/ ESD dissipative according to EN 61340

3551	grey	Size 35–47
------	------	------------



## REFLEXOR<sup>®</sup> MEN

replaceable, microfiber covered Reflexor footbed | plain surface | antistatic/ ESD dissipative according to EN 61340

3569	white	Size 40–46
3570	anthracite	Size 40–46



## REFLEXOR<sup>®</sup> LADIES

replaceable, microfiber covered Reflexor footbed | plain surface | antistatic/ ESD dissipative according to EN 61340

3567	white	Size 36–42
3568	anthracite	Size 36–42



## REFLEXOR<sup>®</sup> MASSAGE

replaceable Reflexor Massage active-footbed | stimulates the blood circulation by massage knobs | orthopaedic footbed | antistatic/ ESD dissipative according to EN 61340

3565	anthracite	Size 36–42
3566	anthracite	Size 40–46
3572 »comfort«	anthracite	Size 36–43

# TECHNICAL INFORMATION

## BASIC REQUIREMENTS

anti-slip property (SRA, SRB or SRC)

OB

SB

energy absorption of toe cap

–

200 joules

## ADDITIONAL REQUIREMENTS

closed heel area | antistatic |  
energy absorption of heel area

O1

S1

same as O1 | plus water penetration and  
water absorption

O2

S2

same as O2 | plus penetration  
resistance and profiled sole

O3

S3

## REQUIREMENTS | STANDARDS

OB

O1

O2

O3

SB

S1

S2

S3

### BASIC REQUIREMENTS

toe protection (200 joules)

●

●

●

●

anti-slip property (SRA, SRB or SRC)

●

●

●

●

●

●

●

●

### ADDITIONAL REQUIREMENTS

energy absorption  
of heel area

E

○

●

●

●

○

●

●

●

heat insulation  
of the outsole

HI

○

○

○

○

○

○

○

○

cold insulation  
of the outsole

CI

○

○

○

○

○

○

○

○

penetration resistance

P

○

○

○

●

○

○

○

●

antistatic property

A

○

●

●

●

○

●

●

●

### UPPER

water penetration  
and water absorption

WRU

○

●

●

○

●

●

### OUTSOLE

reaction on contact heat

HRO

○

○

○

○

○

○

○

○

fuel resistance

FO

○

○

○

○

○

●

●

●

● fulfills requirements

○ requirement may be fulfilled, but is optional

## SLIP RESISTANCE ACCORDING TO EN ISO 20344-20347:2012

In 2004 the standards EN ISO 20344-20347:2004 have been introduced, supplemented in 2007 by appendix A, concerning requests for slip resistance which are now regulated by the latest standards EN ISO 20344-20347:2012.

For testing the slip resistance, the shoe is fixed in different positions in a measuring device and is drawn over various test floorings. The established value is called slip coefficient.

Tests are performed on various flooring materials such as ceramic tiles with SLS and steel floor with glycerol. Depending on the result of the tested shoe on ceramic tiles or steel floor or even on both, the slip resistance is classified into SRA, SRB or SRC. In standard EN ISO 13287:2007, replacing DIN 4843 part 100 earlier used in Germany, the testing processes are described in detail.

For more information please contact any authorised test and certification institute.



## TECHNOLOGY

### SLIP RESISTANCE EN ISO 20344-20347:2012

<b>SRA</b>	Slip resistance on floors with ceramic tiles with SLS (sodium lauryl ether sulfate solution)
<b>SRB</b>	Slip resistance on steel floor with glycerol
<b>SRC</b>	Slip resistance on floor with ceramic tiles with SLS and on steel floor with glycerol (SRC=SRA+SRB)



# TECHNICAL INFORMATION



**A<sup>micro</sup>** is an innovative high-tech material which is especially water-resistant and breathable. It even surpasses hydrophobic leather. It is washable up to 30°C without shrinking and anti-bacterial, which is making it perfect for the use in hygienic sensitive areas. Additionally it can be equipped with various treatments such as silver ions. Due to its special structure it is light and smooth but at the same time very tearproof and resistant. **A<sup>micro</sup>** replicates leather visually without turning yellow due to direct sunlight.

## MICROFIBER LINING

This material is a new breathable high-tech microfiber lining with an absorption capacity of 8 times its weight in water. It offers a maximum comfort and a complete dryness for a perfect foot climate.

- ▶ Absorbs moisture and desorbs it to the outside
- ▶ Breathable - antimicrobial - odor avoiding
- ▶ Temperature regulating
- ▶ Anti-allergy
- ▶ CO<sub>2</sub> neutral production
- ▶ Free of pollutants
- ▶ Odourless and tearproof

## LINING WITH SILVER IONS

Garments treated with silver ions offer a special antibacterial effect. Due to this catalytic characteristic germs and bacteria are reduced as well as odors inside the shoe. This lining is breathable feels smooth.

## LINING WITH SILVER FIBER

The special, silver fibres are manufactured by using pure silver and a certain thread; these are melted together in a special procedure so that they create a permanent physical connection. This newly formed textile fibre resp. textile yarn is now ready to be combined with all standard yarns and still keeps its functional properties.

These properties and effects are:

- ▶ Antimicrobiological effect = slows down the growth of bacteria which also minimises body-odour
- ▶ Oligodynamic effect = has got an antiseptic effect like copper, gold or silver etc. against certain pathogens
- ▶ Catalytic property = The usually very slow or inhibited reduction of resistant organic-chemical compounds is sped up (e.g. unpleasant odours are eliminated)

## LINING COMFORTEMP<sup>®</sup>

Innovative mPCM-Technology developed by Freudenberg (micro-encapsulated Phase Change Material - micro-capsules equalizing temperature, bedded in non-woven materials).

- ▶ When body-temperature increases the micro-capsules change their physical state and become liquid for a cooling effect. The decrease of body temperature makes them turn back to solid for a warming effect.
- ▶ Excellent breathability and ideal transport of humidity provoke a comfortable, dry sensation.
- ▶ No matter if you are at work, doing sports or in your free time Comfortemp<sup>®</sup> provides you with your personal climate-balance.



# INDEX

Art.-No.	Page	Size	Category	Description	Standard	Marking	Insole
1064	93	36 - 42	Occupational Shoes	clog, fixed heel strap	antistatic		-
1092	92	36 - 42	Occupational Shoes	mule	antistatic		-
1094	92	36 - 42	Occupational Shoes	mule	antistatic		-
1120	71	35 - 48	Occupational Shoes	low shoe, velcro	CE, EN ISO 20347	O1, FO, SRA	3559
1121	71	35 - 48	Occupational Shoes	low shoe, velcro	CE, EN ISO 20347	O1, FO, SRA	3559
1126	73	35 - 48	Occupational Shoes	lace-up shoe	CE, EN ISO 20347	O2, FO, SRA	3559
1127	73	35 - 48	Occupational Shoes	lace-up shoe	CE, EN ISO 20347	O2, FO, SRA	3559
1128	72	35 - 48	Occupational Shoes	slip-on	CE, EN ISO 20347	O2, FO, SRA	3559
1129	72	35 - 48	Occupational Shoes	slip-on	CE, EN ISO 20347	O2, FO, SRA	3559
1130	68	35 - 48	Occupational Shoes	clog, fixed heel strap	CE, EN ISO 20347	OB, A, E, FO, SRA	3558
1131	70	35 - 48	Occupational Shoes	sandal, velcro	CE, EN ISO 20347	O1, FO, SRA	3559
1132	72	35 - 48	Occupational Shoes	slip-on	CE, EN ISO 20347	O2, FO, SRA	3559
1133	73	35 - 48	Occupational Shoes	lace-up shoe	CE, EN ISO 20347	O2, FO, SRA	3559
1135	68	35 - 48	Occupational Shoes	clog, fixed heel strap	CE, EN ISO 20347	OB, A, E, FO, SRA	3558
1136	70	35 - 48	Occupational Shoes	sandal, velcro	CE, EN ISO 20347	O1, FO, SRA	3559
1137	72	35 - 48	Occupational Shoes	slip-on	CE, EN ISO 20347	O2, FO, SRA	3559
1138	73	35 - 48	Occupational Shoes	lace-up shoe	CE, EN ISO 20347	O2, FO, SRA	3559
1141	68	35 - 48	Occupational Shoes	clog, foldable heel strap	CE, EN ISO 20347	OB, A, E, FO, SRA	3558
1142	68	35 - 48	Occupational Shoes	clog, foldable heel strap	CE, EN ISO 20347	OB, A, E, FO, SRA	3558
1151	71	35 - 48	Occupational Shoes	lace-up shoe	CE, EN ISO 20347	O2, FO, SRA	3559
1158	71	35 - 48	Occupational Shoes	lace-up shoe	CE, EN ISO 20347	O1, FO, SRA	3559
1160	69	35 - 43	Occupational Shoes	clog, fixed heel strap	CE, EN ISO 20347	OB, A, E, FO, SRA	3558
1163	69	35 - 43	Occupational Shoes	clog, fixed heel strap	CE, EN ISO 20347	OB, A, E, FO, SRA	3558
1178	69	35 - 43	Occupational Shoes	clog, fixed heel strap	CE, EN ISO 20347	OB, A, E, FO, SRA	3558
1180	69	35 - 43	Occupational Shoes	clog, fixed heel strap	CE, EN ISO 20347	OB, A, E, FO, SRA	3558
2370	63	35 - 47	Occupational Shoes	slip-on	CE, EN ISO 20347	O1, SRA	-
2600	64	35 - 47	Occupational Shoes	lace-up shoe	CE, EN ISO 20347	O1, SRA	3551
2610	64	35 - 47	Occupational Shoes	lace-up shoe	CE, EN ISO 20347	O1, SRA	3551
2620	65	35 - 47	Occupational Shoes	lace-up shoe	CE, EN ISO 20347	O1, SRA	3551
2650	65	35 - 47	Occupational Shoes	lace-up shoe	CE, EN ISO 20347	O1, SRA	3551
2700	62	39 - 47	Occupational Shoes	slip-on	CE, EN ISO 20347	O1, SRA	3551
2710	62	39 - 47	Occupational Shoes	slip-on	CE, EN ISO 20347	O1, SRA	3551
3000	99	34 - 42	Occupational Shoes	service shoe	CE		-
3030	99	36 - 42	Occupational Shoes	service shoe	CE, EN ISO 20347	O1, FO, SRC	-
3081	99	36 - 42	Occupational Shoes	sandal			-
3110	101	39 - 46	Occupational Shoes	lace-up shoe	CE		-
3120	101	39 - 46	Occupational Shoes	lace-up shoe	CE		-
3121	101	39 - 46	Occupational Shoes	lace-up shoe	CE		-
3130	101	39 - 46	Occupational Shoes	lace-up shoe	CE		-
3551	113	35 - 47	Insole	fleece			-
3558	112	35 - 48	Insole	acc Wave			-
3559	112	35 - 48	Insole	acc Wave			-
3565	113	36 - 42	Insole	Reflexor® Massage			-
3566	113	40 - 46	Insole	Reflexor® Massage			-
3567	113	36 - 42	Insole	Reflexor®, white			-
3568	113	36 - 42	Insole	Reflexor®, anthracite			-
3569	113	40 - 46	Insole	Reflexor®, white			-



Art.-No.	Page	Size	Category	Description	Standard	Marking	Insole
3570	113	40 - 46	Insole	Reflexor®, anthracite			-
3572	113	36 - 43	Insole	Reflexor® massage			-
3573	112	35 - 48	Insole	acc Wave			-
3574	112	35 - 48	Insole	acc Wave			-
3575	112	35 - 48	Insole	acc Wave			-
3620	107	35 - 47	Occupational Shoes	boot	CE, EN ISO 20347	OB, A, E, SRA	-
3900	107	36 - 48	Occupational Shoes	overshoe			-
3910	107	36 - 48	Occupational Shoes	overshoe			-
3920	103	36 - 42	Occupational Shoes	trotteur			-
3940	103	36 - 42	Occupational Shoes	pumps	ESD dissipative		-
3980	103	36 - 42	Occupational Shoes	pumps	ESD dissipative		-
3990	103	36 - 42	Occupational Shoes	pumps	ESD dissipative		-
4011	56	34 - 43	Occupational Shoes	mule	CE, EN ISO 20347	OB, A, FO, SRC	-
4020	56	34 - 43	Occupational Shoes	mule	CE, EN ISO 20347	OB, A, FO, SRC	-
4022	56	34 - 43	Occupational Shoes	mule	CE, EN ISO 20347	OB, A, FO, SRC	-
4040	58	34 - 48	Occupational Shoes	clog, fixed heel strap	CE, EN ISO 20347	OB, A, FO, SRC	-
4045	58	34 - 48	Occupational Shoes	clog, fixed heel strap	CE, EN ISO 20347	OB, A, FO, SRC	-
4050	58	34 - 48	Occupational Shoes	clog, fixed heel strap	CE, EN ISO 20347	OB, A, FO, SRC	-
4055	58	34 - 48	Occupational Shoes	clog, fixed heel strap	CE, EN ISO 20347	OB, A, FO, SRC	-
4060	59	34 - 43	Occupational Shoes	clog, fixed heel strap	CE, EN ISO 20347	OB, A, FO, SRC	-
4061	59	34 - 43	Occupational Shoes	clog, fixed heel strap	CE, EN ISO 20347	OB, A, FO, SRC	-
4070	59	34 - 48	Occupational Shoes	clog, fixed heel strap	CE, EN ISO 20347	OB, A, FO, SRC	-
4075	59	34 - 48	Occupational Shoes	clog, fixed heel strap	CE, EN ISO 20347	OB, A, FO, SRC	-
4080	57	34 - 48	Occupational Shoes	mule	CE, EN ISO 20347	OB, A, FO, SRC	-
4085	57	34 - 48	Occupational Shoes	mule	CE, EN ISO 20347	OB, A, FO, SRC	-
4086	56	34 - 48	Occupational Shoes	mule	CE, EN ISO 20347	OB, A, FO, SRC	-
4090	57	34 - 48	Occupational Shoes	sandal	CE, EN ISO 20347	OB, A, FO, SRC	-
4096	57	34 - 48	Occupational Shoes	sandal	CE, EN ISO 20347	OB, A, FO, SRC	-
5001	27	36 - 42	Occupational Shoes	clog, foldable heel strap	CE, EN ISO 20347	OB, A, E, FO, SRC	-
5004	27	36 - 42	Occupational Shoes	clog, foldable heel strap	CE, EN ISO 20347	OB, A, E, FO, SRC	-
5007	23	35 - 47	Occupational Shoes	clog, foldable heel strap	CE, EN ISO 20347	OB, A, FO, SRC	-
5008	27	36 - 42	Occupational Shoes	clog, foldable heel strap	CE, EN ISO 20347	OB, A, E, FO, SRC	-
5009	27	36 - 42	Occupational Shoes	clog, foldable heel strap	CE, EN ISO 20347	OB, A, E, FO, SRC	-
5010	26	36 - 42	Occupational Shoes	clog, foldable heel strap	CE, EN ISO 20347	OB, A, E, FO, SRC	-
5011	26	36 - 42	Occupational Shoes	clog, foldable heel strap	CE, EN ISO 20347	OB, A, E, FO, SRC	-
5013	22	35 - 47	Occupational Shoes	clog, foldable heel strap	CE, EN ISO 20347	OB, A, FO, SRC	-
5080	23	35 - 43	Occupational Shoes	clog, foldable heel strap	CE, EN ISO 20347	OB, A, FO, SRC	-
5081	22	35 - 43	Occupational Shoes	clog, foldable heel strap	CE, EN ISO 20347	OB, A, FO, SRC	-
5100	46	36 - 47	Occupational Shoes	clog, fixed heel strap	CE, EN ISO 20347	OB, A, FO, WRU, SRC	-
5150	46	36 - 47	Occupational Shoes	clog, fixed heel strap	CE, EN ISO 20347	OB, A, FO, WRU, SRC	-
5200	44	36 - 47	Occupational Shoes	clog, foldable heel strap	CE, EN ISO 20347	OB, A, FO, WRU, SRC	-
5220	47	36 - 47	Occupational Shoes	clog, fixed heel strap	CE, EN ISO 20347	OB, A, FO, WRU, SRC	-
5225	47	36 - 47	Occupational Shoes	clog, fixed heel strap	CE, EN ISO 20347	OB, A, FO, WRU, SRC	-
5240	47	36 - 47	Occupational Shoes	clog, fixed heel strap	CE, EN ISO 20347	OB, A, FO, SRC	-
5245	47	36 - 47	Occupational Shoes	clog, fixed heel strap	CE, EN ISO 20347	OB, A, FO, SRC	-
5250	44	36 - 47	Occupational Shoes	clog, foldable heel strap	CE, EN ISO 20347	OB, A, FO, WRU, SRC	-
5300	45	36 - 47	Occupational Shoes	clog, foldable heel strap	CE, EN ISO 20347	OB, A, FO, SRC	-

**INDEX**

Art.-No.	Page	Size	Category	Description	Standard	Marking	Insole
5310	45	36 - 47	Occupational Shoes	clog, foldable heel strap	CE, EN ISO 20347	OB, A, FO, SRC	-
5700	89	40 - 46	Occupational Shoes	lace-up shoe	CE, EN ISO 20347	O1, SRB	3566/ 3569
5710	89	40 - 46	Occupational Shoes	lace-up shoe	CE, EN ISO 20347	O1, SRB	3566/ 3570
5750	89	40 - 46	Occupational Shoes	slip-on	CE, EN ISO 20347	O1, SRB	3566/ 3569
5830	88	40 - 46	Occupational Shoes	clog, foldable heel strap	CE, EN ISO 20347	OB, A, E, SRB	3566/ 3569
5840	88	40 - 46	Occupational Shoes	clog, foldable heel strap	CE, EN ISO 20347	OB, A, E, SRB	3566/ 3570
5890	89	40 - 46	Occupational Shoes	sandal, velcro	CE, EN ISO 20347	OB, A, E, SRB	3566/ 3570
6610	93	36 - 42	Occupational Shoes	sandal			-
6700	84	35 - 48	Occupational Shoes	lace-up shoe	CE, EN ISO 20347	O1, FO, SRC	3575
6701	84	35 - 48	Occupational Shoes	lace-up shoe	CE, EN ISO 20347	O1, FO, SRC	3575
6711	85	35 - 48	Occupational Shoes	lace-up shoe	CE, EN ISO 20347	O1, FO, SRC	3575
6720	80	35 - 48	Occupational Shoes	lace-up shoe	CE, EN ISO 20347	O1, FO, SRC	3575
6721	80	35 - 48	Occupational Shoes	lace-up shoe	CE, EN ISO 20347	O1, FO, SRC	3575
6730	80	35 - 48	Occupational Shoes	lace-up shoe	CE, EN ISO 20347	O1, FO, SRC	3575
6731	80	35 - 48	Occupational Shoes	lace-up shoe	CE, EN ISO 20347	O1, FO, SRC	3575
6740	77	35 - 48	Occupational Shoes	slip-on	CE, EN ISO 20347	O2, FO, SRC	3575
6741	77	35 - 48	Occupational Shoes	slip-on	CE, EN ISO 20347	O2, FO, SRC	3575
6750	85	35 - 48	Occupational Shoes	lace-up shoe	CE, EN ISO 20347	O2, FO, SRC	3575
6751	85	35 - 48	Occupational Shoes	lace-up shoe	CE, EN ISO 20347	O2, FO, SRC	3575
6752	85	35 - 48	Occupational Shoes	lace-up shoe	CE, EN ISO 20347	O2, FO, SRC	3575
6760	78	35 - 48	Occupational Shoes	lace-up shoe	CE, EN ISO 20347	O1, FO, SRC	3575
6761	78	35 - 48	Occupational Shoes	lace-up shoe	CE, EN ISO 20347	O1, FO, SRC	3575
6762	79	35 - 48	Occupational Shoes	lace-up shoe	CE, EN ISO 20347	O1, FO, SRC	3575
6763	79	35 - 48	Occupational Shoes	lace-up shoe	CE, EN ISO 20347	O1, FO, SRC	3575
6764	79	35 - 48	Occupational Shoes	lace-up shoe	CE, EN ISO 20347	O1, FO, SRC	3575
6770	81	35 - 48	Occupational Shoes	lace-up shoe	CE, EN ISO 20347	O2, FO, SRC	3575
6771	81	35 - 48	Occupational Shoes	lace-up shoe	CE, EN ISO 20347	O2, FO, SRC	3575
6780	82	35 - 48	Occupational Shoes	lace-up shoe	CE, EN ISO 20347	O2, FO, SRC	3575
6781	82	35 - 48	Occupational Shoes	lace-up shoe	CE, EN ISO 20347	O2, FO, SRC	3575
6782	83	35 - 48	Occupational Shoes	lace-up shoe	CE, EN ISO 20347	O2, FO, SRC	3575
6783	83	35 - 48	Occupational Shoes	lace-up shoe	CE, EN ISO 20347	O2, FO, SRC	3575
6784	83	35 - 48	Occupational Shoes	lace-up shoe	CE, EN ISO 20347	O2, FO, SRC	3575
6785	83	35 - 48	Occupational Shoes	lace-up shoe	CE, EN ISO 20347	O2, FO, SRC	3575
6795	76	35 - 48	Occupational Shoes	sandal, velcro	CE, EN ISO 20347	O1, FO, SRC	3575
6796	76	35 - 48	Occupational Shoes	sandal, velcro	CE, EN ISO 20347	O1, FO, SRC	3575
6803	96	36 - 43	Occupational Shoes	clog, foldable heel strap	CE, EN ISO 20347	OB, A, E, SRB	3572
6809	96	36 - 43	Occupational Shoes	mule	CE, EN ISO 20347	OB, A, E, SRB	3572
6813	96	36 - 43	Occupational Shoes	clog, foldable heel strap	CE, EN ISO 20347	OB, A, E, SRB	3572
6819	96	36 - 43	Occupational Shoes	mule	CE, EN ISO 20347	OB, A, E, SRB	3572
6872	97	36 - 43	Occupational Shoes	sandal	CE, EN ISO 20347	OB, A, E, SRB	3572
6874	97	36 - 43	Occupational Shoes	sandal	CE, EN ISO 20347	OB, A, E, SRB	3572
6886	97	36 - 43	Occupational Shoes	service shoe	CE, EN ISO 20347	OB, A, E, SRB	3572
6900	91	36 - 42	Occupational Shoes	lace-up shoe	CE, EN ISO 20347	O1, SRB	3565/ 3567
6902	90	36 - 42	Occupational Shoes	mule	CE, EN ISO 20347	OB, A, E, SRB	3565/ 3567
6903	91	36 - 42	Occupational Shoes	clog, foldable heel strap	CE, EN ISO 20347	OB, A, E, SRB	3565/ 3567
6910	91	36 - 42	Occupational Shoes	lace-up shoe	CE, EN ISO 20347	O1, SRB	3565/ 3568
6912	90	36 - 42	Occupational Shoes	mule	CE, EN ISO 20347	OB, A, E, SRB	3565/ 3568





Art.-No.	Page	Size	Category	Description	Standard	Marking	Insole
6913	91	36 - 42	Occupational Shoes	clog, foldable heel strap	CE, EN ISO 20347	OB, A, E, SRB	3565/ 3568
6990	90	36 - 42	Occupational Shoes	sandal, velcro	CE, EN ISO 20347	OB, A, E, SRB	3565/ 3568
7001	27	36 - 42	Occupational Shoes	clog, foldable heel strap	CE, EN ISO 20347	OB, A, E, FO, SRC	-
7002	27	36 - 42	Occupational Shoes	clog, foldable heel strap	CE, EN ISO 20347	OB, A, E, FO, SRC	-
7008	27	36 - 42	Occupational Shoes	clog, foldable heel strap	CE, EN ISO 20347	OB, A, E, FO, SRC	-
7009	27	36 - 42	Occupational Shoes	clog, foldable heel strap	CE, EN ISO 20347	OB, A, E, FO, SRC	-
7020	20	35 - 47	Occupational Shoes	clog, foldable heel strap	CE, EN ISO 20347	OB, FO, SRC	-
7021	20	35 - 47	Occupational Shoes	clog, foldable heel strap	CE, EN ISO 20347	OB, FO, SRC	-
7030	20	35 - 47	Occupational Shoes	clog, foldable heel strap	CE, EN ISO 20347	OB, FO, SRC	-
7031	20	35 - 47	Occupational Shoes	clog, foldable heel strap	CE, EN ISO 20347	OB, FO, SRC	-
7050	25	35 - 47	Occupational Shoes	clog	CE, EN ISO 20347	OB, FO, SRC	-
7080	23	35 - 43	Occupational Shoes	clog, foldable heel strap	CE, EN ISO 20347	OB, FO, SRC	-
7081	22	35 - 43	Occupational Shoes	clog, foldable heel strap	CE, EN ISO 20347	OB, FO, SRC	-
7090	23	35 - 43	Occupational Shoes	clog, foldable heel strap	CE, EN ISO 20347	OB, FO, SRC	-
7091	22	35 - 43	Occupational Shoes	clog, foldable heel strap	CE, EN ISO 20347	OB, FO, SRC	-
7110	26	36 - 42	Occupational Shoes	clog, foldable heel strap	CE, EN ISO 20347	OB, A, E, FO, SRC	-
7111	26	36 - 42	Occupational Shoes	clog, foldable heel strap	CE, EN ISO 20347	OB, A, E, FO, SRC	-
7201	24	35 - 47	Occupational Shoes	clog, foldable heel strap	CE, EN ISO 20347	OB, FO, SRC	-
7203	24	35 - 47	Occupational Shoes	clog, foldable heel strap	CE, EN ISO 20347	OB, FO, SRC	-
7204	21	35 - 47	Occupational Shoes	clog, foldable heel strap	CE, EN ISO 20347	OB, FO, SRC	-
7205	21	35 - 47	Occupational Shoes	clog, foldable heel strap	CE, EN ISO 20347	OB, FO, SRC	-
7207	21	35 - 43	Occupational Shoes	clog, foldable heel strap	CE, EN ISO 20347	OB, FO, SRC	-
7208	25	35 - 47	Occupational Shoes	clog, fixed heel strap	CE, EN ISO 20347	OB, FO, SRC	-
7209	25	35 - 47	Occupational Shoes	clog, fixed heel strap	CE, EN ISO 20347	OB, FO, SRC	-
7212	24	35 - 47	Occupational Shoes	clog, foldable heel strap	CE, EN ISO 20347	OB, FO, SRC	-
7310	32	35 - 48	Occupational Shoes	clog, foldable heel strap	CE, EN ISO 20347	OB, A, E, FO, SRC	3574
7312	32	35 - 48	Occupational Shoes	clog, foldable heel strap	CE, EN ISO 20347	OB, A, E, FO, SRC	3574
7313	33	35 - 48	Occupational Shoes	clog, foldable heel strap	CE, EN ISO 20347	OB, A, E, FO, SRC	3574
7315	33	35 - 48	Occupational Shoes	clog, foldable heel strap	CE, EN ISO 20347	OB, A, E, FO, SRC	3574
7331	34	35 - 48	Occupational Shoes	clog, fixed heel strap	CE, EN ISO 20347	OB, A, E, FO, SRC	3574
7332	34	35 - 48	Occupational Shoes	clog, fixed heel strap	CE, EN ISO 20347	OB, A, E, FO, SRC	3574
7335	34	35 - 48	Occupational Shoes	clog, fixed heel strap	CE, EN ISO 20347	OB, A, E, FO, SRC	3574
7341	35	35 - 48	Occupational Shoes	clog, fixed heel strap	CE, EN ISO 20347	OB, A, E, FO, SRC	3574
7342	35	35 - 48	Occupational Shoes	clog, fixed heel strap	CE, EN ISO 20347	OB, A, E, FO, SRC	3574
7345	35	35 - 48	Occupational Shoes	clog, fixed heel strap	CE, EN ISO 20347	OB, A, E, FO, SRC	3574
7360	36	35 - 48	Occupational Shoes	clog, fixed heel strap	CE, EN ISO 20347	OB, A, E, FO, SRC	3574
7361	36	35 - 48	Occupational Shoes	clog, fixed heel strap	CE, EN ISO 20347	OB, A, E, FO, SRC	3574
7362	37	35 - 48	Occupational Shoes	clog, fixed heel strap	CE, EN ISO 20347	OB, A, E, FO, SRC	3574
7363	37	35 - 48	Occupational Shoes	clog, fixed heel strap	CE, EN ISO 20347	OB, A, E, FO, SRC	3574
7364	37	35 - 48	Occupational Shoes	clog, fixed heel strap	CE, EN ISO 20347	OB, A, E, FO, SRC	3574
7365	37	35 - 48	Occupational Shoes	clog, fixed heel strap	CE, EN ISO 20347	OB, A, E, FO, SRC	3574
7366	36	35 - 48	Occupational Shoes	clog, fixed heel strap	CE, EN ISO 20347	OB, A, E, FO, SRC	3574
7401	99	36 - 42	Occupational Shoes	slip-on			-
7520	29	36 - 42	Occupational Shoes	clog, foldable heel strap	CE, EN ISO 20347	OB, A, E, FO, SRC	-
7521	29	36 - 42	Occupational Shoes	clog, foldable heel strap	CE, EN ISO 20347	OB, A, E, FO, SRC	-
7530	29	36 - 42	Occupational Shoes	clog, foldable heel strap	CE, EN ISO 20347	OB, A, E, FO, SRC	-
7531	29	36 - 42	Occupational Shoes	clog, foldable heel strap	CE, EN ISO 20347	OB, A, E, FO, SRC	-

**INDEX**

Art.-No.	Page	Size	Category	Description	Standard	Marking	Insole
7620	40	35 - 43	Occupational Shoes	clog, fixed heel strap	CE, EN ISO 20347	OB, A, E, FO, SRC	3573
7621	40	35 - 43	Occupational Shoes	clog, fixed heel strap	CE, EN ISO 20347	OB, A, E, FO, SRC	3573
7622	41	35 - 48	Occupational Shoes	clog, fixed heel strap	CE, EN ISO 20347	OB, A, E, FO, SRC	3573
7623	41	35 - 43	Occupational Shoes	clog, fixed heel strap	CE, EN ISO 20347	OB, A, E, FO, SRC	3573
7630	40	35 - 48	Occupational Shoes	clog, foldable heel strap	CE, EN ISO 20347	OB, A, E, FO, SRC	3573
7631	40	35 - 48	Occupational Shoes	clog, foldable heel strap	CE, EN ISO 20347	OB, A, E, FO, SRC	3573
8011	56	34 - 43	Occupational Shoes	mule	CE, EN ISO 20347	OB, A, FO, SRC	-
8020	56	34 - 43	Occupational Shoes	mule	CE, EN ISO 20347	OB, A, FO, SRC	-
8022	56	34 - 43	Occupational Shoes	mule	CE, EN ISO 20347	OB, A, FO, SRC	-
8040	58	34 - 48	Occupational Shoes	clog, fixed heel strap	CE, EN ISO 20347	OB, A, FO, SRC	-
8045	58	34 - 48	Occupational Shoes	clog, fixed heel strap	CE, EN ISO 20347	OB, A, FO, SRC	-
8060	59	34 - 43	Occupational Shoes	clog, fixed heel strap	CE, EN ISO 20347	OB, A, FO, SRC	-
8061	59	34 - 43	Occupational Shoes	clog, fixed heel strap	CE, EN ISO 20347	OB, A, FO, SRC	-
8096	57	34 - 48	Occupational Shoes	sandal	CE, EN ISO 20347	OB, A, FO, SRC	-
8200	52	35 - 47	Occupational Shoes	clog, foldable heel strap	CE, EN ISO 20347	OB, A, FO, SRA	-
8202	52	48 - 51	Occupational Shoes	clog, foldable heel strap	CE, EN ISO 20347	OB, A, FO, SRA	-
8210	52	35 - 47	Occupational Shoes	clog, foldable heel strap	CE, EN ISO 20347	OB, A, FO, SRA	-
8212	52	48 - 51	Occupational Shoes	clog, foldable heel strap	CE, EN ISO 20347	OB, A, FO, SRA	-
8220	50	35 - 43	Occupational Shoes	clog, foldable heel strap	CE, EN ISO 20347	OB, A, FO, SRA	-
8230	50	35 - 43	Occupational Shoes	clog, foldable heel strap	CE, EN ISO 20347	OB, A, FO, SRA	-
8300	51	35 - 47	Occupational Shoes	clog, foldable heel strap	CE, EN ISO 20347	OB, A, FO, SRA	-
8302	51	48 - 51	Occupational Shoes	clog, foldable heel strap	CE, EN ISO 20347	OB, A, FO, SRA	-
8310	51	35 - 47	Occupational Shoes	clog, foldable heel strap	CE, EN ISO 20347	OB, A, FO, SRA	-
8312	51	48 - 51	Occupational Shoes	clog, foldable heel strap	CE, EN ISO 20347	OB, A, FO, SRA	-
8320	51	35 - 47	Occupational Shoes	clog, foldable heel strap	CE, EN ISO 20347	OB, A, FO, SRA	-
8322	51	48 - 51	Occupational Shoes	clog, foldable heel strap	CE, EN ISO 20347	OB, A, FO, SRA	-
8330	51	35 - 47	Occupational Shoes	clog, foldable heel strap	CE, EN ISO 20347	OB, A, FO, SRA	-
8332	51	48 - 51	Occupational Shoes	clog, foldable heel strap	CE, EN ISO 20347	OB, A, FO, SRA	-
8400	53	35 - 47	Occupational Shoes	clog, fixed heel strap	CE, EN ISO 20347	OB, A, FO, SRA	-
8600	53	35 - 47	Occupational Shoes	clog, fixed heel strap	CE, EN ISO 20347	OB, A, FO, SRA	-
8602	53	48 - 51	Occupational Shoes	clog, fixed heel strap	CE, EN ISO 20347	OB, A, FO, SRA	-
9100	46	36 - 47	Occupational Shoes	clog, fixed heel strap	CE, EN ISO 20347	OB, A, E, FO, WRU, SRC	-
9110	46	36 - 47	Occupational Shoes	clog, fixed heel strap	CE, EN ISO 20347	OB, A, FO, WRU, SRC	-
9150	46	36 - 47	Occupational Shoes	clog, fixed heel strap	CE, EN ISO 20347	OB, A, FO, WRU, SRC	-
9200	44	36 - 47	Occupational Shoes	clog, foldable heel strap	CE, EN ISO 20347	OB, A, FO, WRU, SRC	-
9220	47	36 - 47	Occupational Shoes	clog, fixed heel strap	CE, EN ISO 20347	OB, A, FO, WRU, SRC	-
9225	47	36 - 47	Occupational Shoes	clog, fixed heel strap	CE, EN ISO 20347	OB, A, FO, WRU, SRC	-
9230	46	36 - 47	Occupational Shoes	clog, fixed heel strap	CE, EN ISO 20347	OB, A, FO, WRU, SRC	-
9240	47	36 - 47	Occupational Shoes	clog, fixed heel strap	CE, EN ISO 20347	OB, A, FO, SRC	-
9245	47	36 - 47	Occupational Shoes	clog, fixed heel strap	CE, EN ISO 20347	OB, A, FO, SRC	-
9250	44	36 - 47	Occupational Shoes	clog, foldable heel strap	CE, EN ISO 20347	OB, A, FO, WRU, SRC	-
9252	44	36 - 47	Occupational Shoes	clog, foldable heel strap	CE, EN ISO 20347	OB, A, FO, WRU, SRC	-
9300	45	36 - 47	Occupational Shoes	clog, foldable heel strap	CE, EN ISO 20347	OB, A, FO, SRC	-
9310	45	36 - 47	Occupational Shoes	clog, foldable heel strap	CE, EN ISO 20347	OB, A, FO, SRC	-
9600	110	35 - 46	Occupational Shoes	clog, foldable heel strap	CE, EN ISO 20347	OB, A, E, SRC	-
9610	110	35 - 46	Occupational Shoes	clog, foldable heel strap	CE, EN ISO 20347	OB, A, E, SRC	-
9620	111	35 - 46	Occupational Shoes	clog, foldable heel strap	CE, EN ISO 20347	OB, A, E, SRC	-



Art.-No.	Page	Size	Category	Description	Standard	Marking	Insole
9630	111	35 - 46	Occupational Shoes	clog, foldable heel strap	CE, EN ISO 20347	OB, A, E, SRC	-
31064	93	36 - 42	Occupational Shoes	clog, fixed heel strap	ESD dissipative		-
31092	92	36 - 42	Occupational Shoes	mule	ESD dissipative		-
31094	92	36 - 42	Occupational Shoes	mule	ESD dissipative		-
31120	71	35 - 48	Occupational Shoes	low shoe, velcro	CE, EN ISO 20347	O1, FO, SRA	3559
31121	71	35 - 48	Occupational Shoes	low shoe, velcro	CE, EN ISO 20347	O1, FO, SRA	3559
31126	73	35 - 48	Occupational Shoes	lace-up shoe	CE, EN ISO 20347	O2, FO, SRA	3559
31127	73	35 - 48	Occupational Shoes	lace-up shoe	CE, EN ISO 20347	O2, FO, SRA	3559
31128	72	35 - 48	Occupational Shoes	slip-on	CE, EN ISO 20347	O2, FO, SRA	3559
31129	72	35 - 48	Occupational Shoes	slip-on	CE, EN ISO 20347	O2, FO, SRA	3559
31130	68	35 - 48	Occupational Shoes	clog, fixed heel strap	CE, EN ISO 20347	OB, A, E, FO, SRA	3558
31131	70	35 - 48	Occupational Shoes	sandal, velcro	CE, EN ISO 20347	O1, FO, SRA	3559
31132	72	35 - 48	Occupational Shoes	slip-on	CE, EN ISO 20347	O2, FO, SRA	3559
31133	73	35 - 48	Occupational Shoes	lace-up shoe	CE, EN ISO 20347	O2, FO, SRA	3559
31135	68	35 - 48	Occupational Shoes	clog, fixed heel strap	CE, EN ISO 20347	OB, A, E, FO, SRA	3558
31136	70	35 - 48	Occupational Shoes	sandal, velcro	CE, EN ISO 20347	O1, FO, SRA	3559
31137	72	35 - 48	Occupational Shoes	slip-on	CE, EN ISO 20347	O2, FO, SRA	3559
31138	73	35 - 48	Occupational Shoes	lace-up shoe	CE, EN ISO 20347	O2, FO, SRA	3559
31141	68	35 - 48	Occupational Shoes	clog, foldable heel strap	CE, EN ISO 20347	OB, A, E, FO, SRA	3558
31142	68	35 - 48	Occupational Shoes	clog, foldable heel strap	CE, EN ISO 20347	OB, A, E, FO, SRA	3558
31151	71	35 - 48	Occupational Shoes	lace-up shoe	CE, EN ISO 20347	O2, FO, SRA	3559
31158	71	35 - 48	Occupational Shoes	lace-up shoe	CE, EN ISO 20347	O1, FO, SRA	3559
31160	69	35 - 43	Occupational Shoes	clog, fixed heel strap	CE, EN ISO 20347	OB, A, E, FO, SRA	3558
31163	69	35 - 43	Occupational Shoes	clog, fixed heel strap	CE, EN ISO 20347	OB, A, E, FO, SRA	3558
31178	69	35 - 43	Occupational Shoes	clog, fixed heel strap	CE, EN ISO 20347	OB, A, E, FO, SRA	3558
31180	69	35 - 43	Occupational Shoes	clog, fixed heel strap	CE, EN ISO 20347	OB, A, E, FO, SRA	3558
32300	63	35 - 47	Occupational Shoes	slip-on, perforated	CE, EN ISO 20347	O1, SRA	3551
32310	63	39 - 47	Occupational Shoes	slip-on, perforated	CE, EN ISO 20347	O1, SRA	3551
32370	63	35 - 47	Occupational Shoes	slip-on	CE, EN ISO 20347	O1, SRA	-
32430	105	40 - 47	Occupational Shoes	lace-up shoe	CE, EN ISO 20347	O1, SRA	-
32440	105	40 - 47	Occupational Shoes	lace-up shoe	CE, EN ISO 20347	O1, SRA	-
32450	105	40 - 47	Occupational Shoes	lace-up shoe	CE, EN ISO 20347	O1, SRA	-
32600	64	35 - 47	Occupational Shoes	lace-up shoe	CE, EN ISO 20347	O1, SRA	3551
32610	64	35 - 47	Occupational Shoes	lace-up shoe	CE, EN ISO 20347	O1, SRA	3551
32620	65	35 - 47	Occupational Shoes	lace-up shoe	CE, EN ISO 20347	O1, SRA	3551
32650	65	35 - 47	Occupational Shoes	lace-up shoe	CE, EN ISO 20347	O1, SRA	3551
32700	62	39 - 47	Occupational Shoes	slip-on	CE, EN ISO 20347	O1, SRA	3551
32710	62	39 - 47	Occupational Shoes	slip-on	CE, EN ISO 20347	O1, SRA	3551
32922	104	39 - 47	Occupational Shoes	lace-up shoe	CE, EN ISO 20347	OB, A, SRA	-
32923	104	39 - 47	Occupational Shoes	lace-up shoe	CE, EN ISO 20347	OB, A, SRA	-
35600	52	35 - 47	Occupational Shoes	clog, foldable heel strap	CE, EN ISO 20347	OB, A, FO, SRA	-
35602	52	48 - 51	Occupational Shoes	clog, foldable heel strap	CE, EN ISO 20347	OB, A, FO, SRA	-
35700	89	40-46	Occupational Shoes	lace-up shoe	CE, EN ISO 20347	O1, SRB	3566/ 3569
35710	89	40-46	Occupational Shoes	lace-up shoe	CE, EN ISO 20347	O1, SRB	3566/ 3570
35750	89	40-46	Occupational Shoes	slip-on	CE, EN ISO 20347	O1, SRB	3566/ 3569
35830	88	40-46	Occupational Shoes	clog, foldable heel strap	CE, EN ISO 20347	OB, A, E, SRB	3566/ 3569
35840	88	40-46	Occupational Shoes	clog, foldable heel strap	CE, EN ISO 20347	OB, A, E, SRB	3566/ 3570

**INDEX**

Art.-No.	Page	Size	Category	Description	Standard	Marking	Insole
35890	89	40 - 46	Occupational Shoes	sandal, velcro	CE, EN ISO 20347	OB, A, E, SRB	3566/ 3570
36610	93	36 - 42	Occupational Shoes	sandal			-
36700	84	35 - 48	Occupational Shoes	lace-up shoe	CE, EN ISO 20347	O1, FO, SRC	3575
36701	84	35 - 48	Occupational Shoes	lace-up shoe	CE, EN ISO 20347	O1, FO, SRC	3575
36711	85	35 - 48	Occupational Shoes	lace-up shoe	CE, EN ISO 20347	O1, FO, SRC	3575
36720	80	35 - 48	Occupational Shoes	lace-up shoe	CE, EN ISO 20347	O1, FO, SRC	3575
36721	80	35 - 48	Occupational Shoes	lace-up shoe	CE, EN ISO 20347	O1, FO, SRC	3575
36730	80	35 - 48	Occupational Shoes	lace-up shoe	CE, EN ISO 20347	O1, FO, SRC	3575
36731	80	35 - 48	Occupational Shoes	lace-up shoe	CE, EN ISO 20347	O1, FO, SRC	3575
36740	77	35 - 48	Occupational Shoes	slip-on	CE, EN ISO 20347	O2, FO, SRC	3575
36741	77	35 - 48	Occupational Shoes	slip-on	CE, EN ISO 20347	O2, FO, SRC	3575
36750	85	35 - 48	Occupational Shoes	lace-up shoe	CE, EN ISO 20347	O2, FO, SRC	3575
36751	85	35 - 48	Occupational Shoes	lace-up shoe	CE, EN ISO 20347	O2, FO, SRC	3575
36752	85	35 - 48	Occupational Shoes	lace-up shoe	CE, EN ISO 20347	O2, FO, SRC	3575
36760	78	35 - 48	Occupational Shoes	lace-up shoe	CE, EN ISO 20347	O1, FO, SRC	3575
36761	78	35 - 48	Occupational Shoes	lace-up shoe	CE, EN ISO 20347	O1, FO, SRC	3575
36762	79	35 - 48	Occupational Shoes	lace-up shoe	CE, EN ISO 20347	O1, FO, SRC	3575
36763	79	35 - 48	Occupational Shoes	lace-up shoe	CE, EN ISO 20347	O1, FO, SRC	3575
36764	79	35 - 48	Occupational Shoes	lace-up shoe	CE, EN ISO 20347	O1, FO, SRC	3575
36770	81	35 - 48	Occupational Shoes	lace-up shoe	CE, EN ISO 20347	O2, FO, SRC	3575
36771	81	35 - 48	Occupational Shoes	lace-up shoe	CE, EN ISO 20347	O2, FO, SRC	3575
36780	82	35 - 48	Occupational Shoes	lace-up shoe	CE, EN ISO 20347	O2, FO, SRC	3575
36781	82	35 - 48	Occupational Shoes	lace-up shoe	CE, EN ISO 20347	O2, FO, SRC	3575
36782	83	35 - 48	Occupational Shoes	lace-up shoe	CE, EN ISO 20347	O2, FO, SRC	3575
36783	83	35 - 48	Occupational Shoes	lace-up shoe	CE, EN ISO 20347	O2, FO, SRC	3575
36784	83	35 - 48	Occupational Shoes	lace-up shoe	CE, EN ISO 20347	O2, FO, SRC	3575
36785	83	35 - 48	Occupational Shoes	lace-up shoe	CE, EN ISO 20347	O2, FO, SRC	3575
36795	76	35 - 48	Occupational Shoes	sandal, velcro	CE, EN ISO 20347	O1, FO, SRC	3575
36796	76	35 - 48	Occupational Shoes	sandal, velcro	CE, EN ISO 20347	O1, FO, SRC	3575
36803	96	36 - 43	Occupational Shoes	clog, foldable heel strap	CE, EN ISO 20347	OB, A, E, SRB	3572
36809	96	36 - 43	Occupational Shoes	mule	CE, EN ISO 20347	OB, A, E, SRB	3572
36813	96	36 - 43	Occupational Shoes	clog, foldable heel strap	CE, EN ISO 20347	OB, A, E, SRB	3572
36819	96	36 - 43	Occupational Shoes	mule	CE, EN ISO 20347	OB, A, E, SRB	3572
36872	97	36 - 43	Occupational Shoes	sandal	CE, EN ISO 20347	OB, A, E, SRB	3572
36874	97	36 - 43	Occupational Shoes	sandal	CE, EN ISO 20347	OB, A, E, SRB	3572
36900	91	36 - 42	Occupational Shoes	lace-up shoe	CE, EN ISO 20347	O1, SRB	3565/ 3567
36902	90	36 - 42	Occupational Shoes	mule	CE, EN ISO 20347	OB, A, E, SRB	3565/ 3567
36903	91	36 - 42	Occupational Shoes	clog, foldable heel strap	CE, EN ISO 20347	OB, A, E, SRB	3565/ 3567
36910	91	36 - 42	Occupational Shoes	lace-up shoe	CE, EN ISO 20347	O1, SRB	3565/ 3568
36912	90	36 - 42	Occupational Shoes	mule	CE, EN ISO 20347	OB, A, E, SRB	3565/ 3568
36913	91	36 - 42	Occupational Shoes	clog, foldable heel strap	CE, EN ISO 20347	OB, A, E, SRB	3565/ 3568
36990	90	36 - 42	Occupational Shoes	sandal	CE, EN ISO 20347	OB, A, E, SRB	3565/ 3568
37310	32	35 - 48	Occupational Shoes	clog, foldable heel strap	CE, EN ISO 20347	OB, A, E, FO, SRC	3574
37312	32	35 - 48	Occupational Shoes	clog, foldable heel strap	CE, EN ISO 20347	OB, A, E, FO, SRC	3574
37313	33	35 - 48	Occupational Shoes	clog, foldable heel strap	CE, EN ISO 20347	OB, A, E, FO, SRC	3574
37315	33	35 - 48	Occupational Shoes	clog, foldable heel strap	CE, EN ISO 20347	OB, A, E, FO, SRC	3574
37331	34	35 - 48	Occupational Shoes	clog, fixed heel strap	CE, EN ISO 20347	OB, A, E, FO, SRC	3574
37332	34	35 - 48	Occupational Shoes	clog, fixed heel strap	CE, EN ISO 20347	OB, A, E, FO, SRC	3574









Your ABEBA distributor:





# Icons



ESD



METAL FREE



SUITABLE FOR KITCHENS



REPLACEABLE INSOLE



BREATHABLE TEXTILE



WASHABLE AT 30° C



WASHABLE AT 60° C



AUTOCLAVABLE



HACCP-COMPLIANT



IDENTIFICATION ACCORDING TO STANDARD



# Size comparison table

D Mondopoint RS mm	D/ F paris point	GB english size	USA	
			women	men
210	34	2	3,5	2,5
217	35	2,5	4,0	3,0
225	36	3,5	5,0	4,0
232	37	4	6,0	4,5
240	38	5	6,5	5,5
247	39	6	7,5	6,0
255	40	6,5	8,0	7,0
262	41	7,5	9,0	7,5
270	42	8	9,5	8,5
277	43	9	10,5	9,5
285	44	9,5	11,5	10,0
292	45	10,5	12,0	11,0
300	46	11,5	13,0	11,5
307	47	12	13,5	12,5
315	48	13	14,5	13,0